

MIDDLE TENNESSEE



GENEALOGY

VOLUME IV, NO. 4 SPRING 1991

MAY PROGRAM

Some Things I Have Learned in 25 Years of
Genealogy and Publishing

Speaker: Byron Sistler

May 18, 1991 - 1:00 P.M.

Auditorium, Ben West Library
Eighth Avenue, North & Union Streets, Nashville

published by
MIDDLE TENNESSEE GENEALOGICAL SOCIETY
P. O. BOX 3016/NASHVILLE, TN 37219-0016

**MIDDLE
TENNESSEE
COUNTIES**

Bedford
Cannon
Cheatham
Clay
Coffee
Davidson
DeKalb
Dickson
Fentress
Franklin
Giles
Grundy
Hickman
Houston
Humphreys
Jackson
Lawrence
Lewis
Lincoln
Macon
Marshall
Maury
Montgomery
Moore
Overton
Perry
Pickett
Putnam
Robertson
Rutherford
Sequatchie
Smith
Stewart
Sumner
Trousdale
VanBuren
Warren
Wayne
White
Williamson
Wilson

POLICIES

GENERAL: Neither the Editor nor the Middle Tennessee Genealogical Society accepts responsibility for accuracy of material. All materials submitted become property of the Society.

SUBMITTING ARTICLES FOR PUBLICATION: Please do. We'd like to see Bible Records, Family Histories, County Records, Cemetery Records, "how-to" articles of general interest, historical anecdotes--any useful or interesting tidbits happened upon while researching that other members may never see. Material should be limited to a published length of 5 pages.

Please make sure hand writing is legible or the document is typed. If you are writing with a word processing program on your computer and can export to ASCII, a computer disk and hard copy is the easiest way for the editor to deal with material. If you happen to use WordPerfect 5.0 a simple disk copy or backup will work fine.

Please include documentation and, in the case of Bible records, written permission from the owner of the Bible. In addition to your name and address we'd appreciate your including your phone number. A final note--if you've got something you just can't quite, but can almost, pull together we'll be happy to work with you on a final edit.

ASK US: Specific research questions and problems will be discussed as space permits in the quarterly.

QUERIES: Will be included in order of receipt as space permits.

BOOK REVIEWS: Books or unique source material available for a fee should be sent directly to Mrs. Shirley Wilson, Book Review Editor, 106 Leeward Point, Hendersonville, TN 37075. All materials become property of the book review editor to be distributed as appropriate.

EDITOR

Barbara J. Sistler
1712 Natchez Trace
Nashville, TN 37212
615/297-3085

OFFICERS

1990 - 1991

President	Mary Glenn Hearne
Vice President	Patricia Gilliam Hastings
Recording Secretary	Nida B. Wheeler
Corresponding Secretary	Myra Petty Hayes
Treasurer	Byron Sistler
One Year Directors	Ray Harris
.....	Yolanda Reid
Two Year Directors	Hugh L. Logan
.....	Barbara Sistler

Volume 4, Number 4 -- Spring 1991

TABLE OF CONTENTS

Editor's Thoughts	134
President's Column, Mary Glenn Hearne	135
Maps - A Useful Genealogical Tool by Shirley Wilson	137
Dr. Albion Amzi McClanahan contributed by Mrs. Gail M. Holman	141
The Original Surveyor's Record Book, 1836-1887, Coffee County, TN by Dorothy Williams Potter	145
Hope Bible Records contributed by Thomas M. Green	151
Sarah Henrietta Green Morton by Thomas M. Green	152
Book Review by Shirley Wilson	153
Jean/Jears in the Civil War, Lincoln County, TN Confederates by Royleta C. Malone	154
Genealogy and GENie® by Martha Colburn	156
George Thompson Family History transcribed and submitted by Betty Dorris Davis	157
Some Notes on the Destruction of Early Tennessee Legislative Papers by Dorothy Williams Potter	158
Society of the Cincinnati by Silas Emmett Lucas, Jr.	159
1856 Cheatham County Tax List, Districts 4 - 8 by Gregory G. Poole	161
Minutes of the Superior Court of North Carolina and Mero District 1788-1798	169
Tennessee Supreme Court Records contributed by Betsy Ragsdale and Gale Bamman, CG	173
Queries	177

Editor's Thoughts

First things first. **RENEWAL DUES ARE PAYABLE AS OF JUNE 1.** Decisions were made at the February meeting. We had a choice of raising the dues to cover the increase in costs of producing and mailing the quarterly or drastically cutting it back in size. The board agreed on the following:

Paid by June 30th the dues are \$15. After that date \$18. Since the major portion of the dues goes to the production and mailing of the quarterly, individual and family memberships are the same price, each receiving one issue.

Another decision -- Meetings are popular with our members. The society will hold BI-MONTHLY meetings instead of quarterly, beginning after our November seminar. On the third Saturday afternoon as usual, January, March, etc. Mark your calendar now for November -- the annual seminar will be held November 9th, the *second* Saturday, to accommodate our speaker--we've got another good one coming. Some of you missed the last workshop because Lloyd Bockstruck was not as widely known as we expected, though we heard NOTHING but praise on the program. Don't make that mistake this year. Jo White Linn will speak; we'll tell you more about her and the program in the next issue.

If imitation is the sincerest form of flattery our member Dorothy Johnson, editor of *Valley Leaves*, the North Alabama Quarterly of the Tennessee Valley Genealogical Society, ought to be quite puffed up by our lifting one idea after another from her--layout, use of borders of Bible records, etc. Dot has been more than generous with her advice and it's all been good.

We don't have a formal policy of naming contributing editors for these issues but mention should be made of some people who make our job much easier. Gale Bamman and Betsy Ragsdale provide us with ready to use Supreme Court records. A computer disk appears for each quarterly. Shirley Wilson seems never tiring in her enthusiasm for producing useful articles. And Dorothy Potter, in addition to coming up with wonderful short pieces she's collected, actually hands over large articles "camera ready." And credit needs to go to the growing number of members willing to contribute family records and sketches which round out the journal so nicely. Our thanks.

Other organizations are starting to send us literature on their publications and upcoming events. Look for this information on the inside back cover.

And first things last. **LET'S GET THOSE RENEWALS IN ON TIME**, save the secretary a mountain of work. Get your genealogy friends interested in the society. No one just joining would guess how young this organization is; we've grown a lot in a short time. BJS

PRESIDENT'S COLUMN

The morning program for May 18 will have Tim Burgess speaking on **THE HISTORY OF BURIAL MARKERS FOR UNION AND CONFEDERATE SOLDIERS**. He will explain the history of the various markers to the current time, the process one goes through to order a marker, and will have available the forms to be used in ordering markers. Time is 10:30 at the Nashville Public Library Auditorium.

Afterwards you will have time for lunch on your own, perhaps at Church Street Center, before our regular general membership meeting at 1:00 p.m. The afternoon session will feature Byron Sistler--we look forward to Byron's sharing his wealth of expertise with us.

Prior to the program we will have a business meeting. Two items need our consideration: passage of the new revisions of the Bylaws which Shirley Wilson has so ably chaired, and election of new officers. A slate was presented by Hugh Logan, Chair of the nominating committee, at the last meeting. Nominations can always be made from the floor.

Tables will be set up in the corridors for collection of dues for the society and also for display of new books and publications of the various members.

Because you showed such interest and enthusiasm for having meetings more frequently, plans are being made to have them bi-monthly. This would begin in 1992 with meetings being held in January, March, May, July, September and November.

Also because of your positive response to genealogical classes such as the group sessions held at the Natchez Trace Genealogical Society, investigations are underway to see if such is feasible here. Plans for having Dr. Brian Trainor of the Ulster Historical Foundation to speak on the Irish Heritage have been considered as a future possibility but this fall is not the appropriate time since our schedule is already committed. We will stay in touch with him.

FORTHCOMING EVENTS include the following conferences: Samford University Institute of Genealogy and Historical Research June 16-21, 1991, Birmingham, AL; National Genealogical Society 1991 Conference in the States, May 29 - June 1, 1991, Portland, OR; 1991 FGS Conference August 15-17, 1991, Ft. Wayne, IN.

The question has arisen recently concerning taping of the programs. The board requests that no tape recording be done without the expressed consent of the speaker. Certainly our speakers deserve that courtesy and some may not wish to be taped since they are planning publication at a later date.

Speaking of tapes, the sessions at the National Genealogical Conference are taped and sold. Recently the Nashville Room has purchased a handful of these tapes relating to Tennessee Research.

Lastly, I would be remiss if I did not thank all the people with whom I have worked for the past two years. Both the board and the general membership have been supportive in our various endeavors. I am grateful. Thank you for the opportunity to serve as your president.

Mary Glenn Hearne
April, 1991



Demographic Map Section, Sumner County, Section 11, 1878

MAPS - A USEFUL GENEALOGICAL TOOL

© Shirley Wilson, G.C., Used by Permission

The use of maps as a genealogical tool is often overlooked by those in search of their ancestors. The importance of maps cannot be overstated. Pinpointing the area where your ancestors lived is critical in determining where the records relating to their existence will be found. It can also be important in determining their migration pattern.

Maps are available in all sizes, shapes and include all areas of the earth's surface. Maps have three basic functions - to locate, to identify and to inventory.

Before using a map, it is extremely important to examine the Legend on the map. This is usually found in small print in a box at the side or bottom of the map and it explains the identifying marks on the map. Look for an arrow, identifying north on the map, as some older maps were not prepared with north at the top of the map. Most maps will also provide the scale, which determines the ratio at which the map was drawn.

This article is not intended to present a complete listing of all of the maps of interest to the genealogist working in Tennessee records, but is designed to emphasize the importance of maps and bring to your attention a few of the more helpful and lesser known maps which might aid the genealogist. The emphasis in this article will be on maps relating to Tennessee which are available at the Tennessee State Library and Archives.

It is important to remember that although your ancestor may have lived in a given county his entire life, it does not necessarily follow that all of his records will be found in that county's courthouse. In some large counties, the courthouse of an adjacent county may have been closer to the home of your ancestor than the one located in his own county. The terrain could also be a factor which might cause your ancestor to journey to a courthouse in another county to obtain a marriage license or record other information. In some cases, it might have been a greater distance to the courthouse in an adjacent county, but easier than traveling down a mountain or crossing a creek or river.

You may also find that your ancestor lived on the border of two counties or even two states. Whenever this occurs, the possibility exists for boundary changes. For a variety of reasons, your ancestor could have owned land and left valuable records in several counties, although he would normally only appear in the census records in one county. If you do not find the record you seek in your ancestor's known county of residence, the next place to look is in adjacent counties. The use of maps will enable you to identify those counties and determine which of them would be the most likely source of information.

From maps, you may also find that a creek, river, cemetery or a mountain pass was named after your ancestor. You may learn that a source of records, such as a cemetery or church was located near where your ancestor lived.

Locating the county of origin through census records and other statewide indexes is one of the first steps in determining which courthouse might contain the records on your family. Some census records will provide the Civil District, Ward, the nearest post office or, if you are fortunate, a city or village where your ancestor lived.

If you are fortunate enough to know the name of a city or village where your ancestors lived, these can usually be located on a standard state highway map. The U. S. Postal Service publishes directories of current post offices, listed alphabetically with a separate listing by state. Older versions of these postal directories are excellent sources for locating post offices that no longer exist.

If your ancestors were landowners in Tennessee, deeds sometimes provide a more precise location. Usually, at least a creek or a civil district can be ascertained through the use of deeds. The boundaries of Civil Districts in rural areas and Wards in large cities can often be determined through the use of old county maps and city directories. Many researchers are unaware that good maps exist for most areas of the United States. Once it is determined what type of map is needed and what area is to be included, the next step is to determine where they can be purchased or utilized.

The Tennessee State Library and Archives has an excellent collection of published atlases and gazetteers from many areas. Their Tennessee map collection varies in time frame, detail and accuracy. Maps are available for some counties for many different years, while very few maps are available for other counties. Maps are also available for some cities, geographical areas and navigable waterways and lakes.

MAPS AVAILABLE AT THE TENNESSEE STATE LIBRARY & ARCHIVES

A 3 x 5 index to many of the maps available at the Tennessee State Library and Archives will be found in the Manuscript Room. This index includes the maps that were available in past years in the Library section of the facility. In general, these maps are indexed by the name of the area covered, with the first map listed being the earliest relating to that particular area. The time frame covered is from about 1760 to the present.

Of special interest is a collection of demographic maps of various counties in Tennessee. See illustration page 136 from Dist. 11, Sumner County. Most of these maps divide the county by civil district and include the names of landowners, creeks, rivers, churches, cemeteries and prominent landmarks. The time frame varies from 1871 to 1907. These maps are quite large in size and extremely detailed in nature, some scaled 1 1/4 inches to the mile. Insets on the maps provide even more detail on individual cities within the county, listing the names of home owners and businesses in the city. A list of these maps is included at the end of this article.

One fascinating map is the Map of Middle Tennessee (#2519) compiled by Edward Ruger under the direction of Col. W. E. Merrill. Although there is no date on the map, the staff has placed the date at about 1863. It includes most of Middle Tennessee. Some areas of the map have been completed in great detail with the names of property owners, creeks, fords, rivers, roads, bridle paths, fords, ferries, etc.

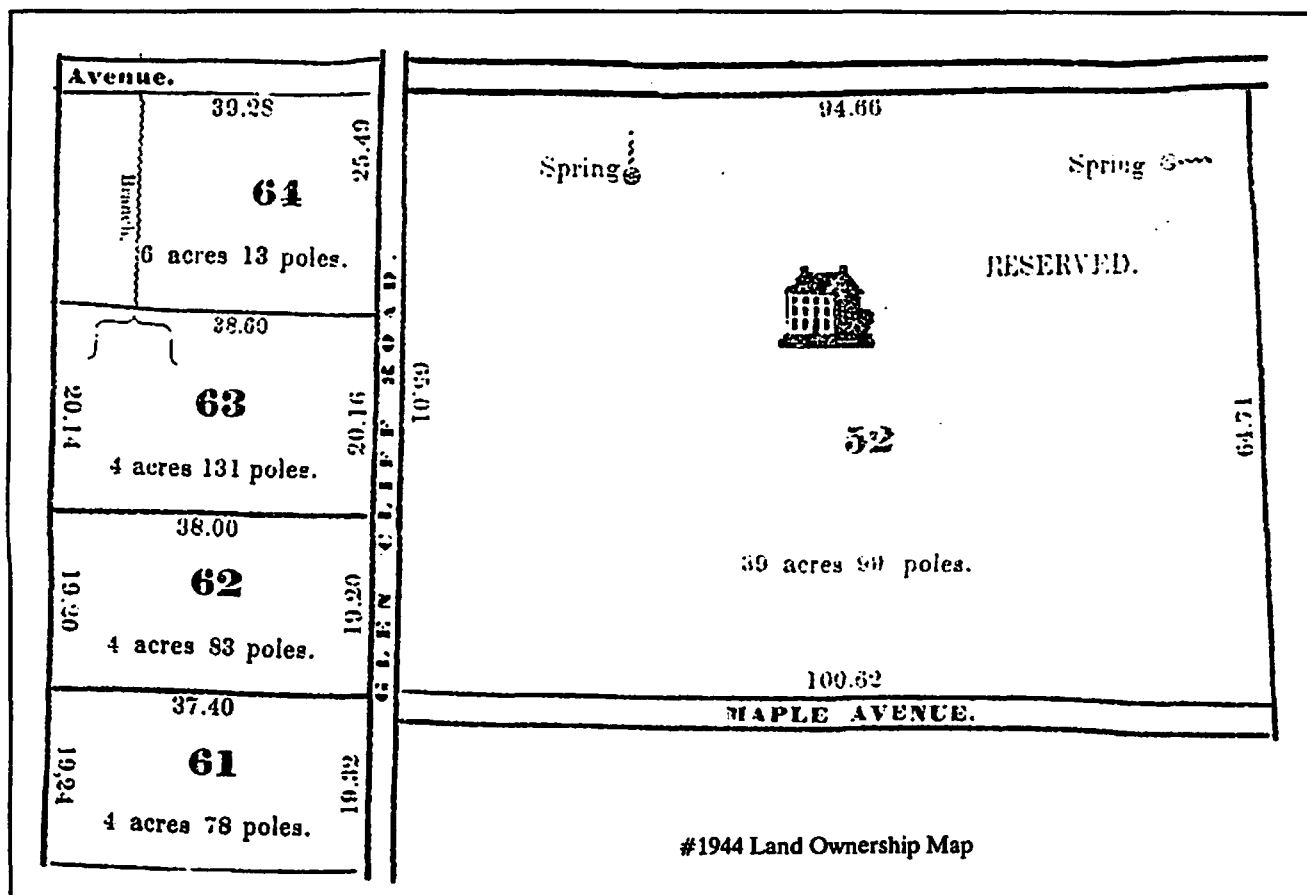
A similar map of the Civil War time period was prepared by Lt. Col. H. C. Wharton (#138). It is scaled 1/2 inch to a mile. Although not as detailed as the Merrill map, some inhabitants are shown on the map.

Geological survey maps can be obtained for most any area in the United States. These maps are commonly called "Topo" or topographical maps. While there are no landowners listed on these maps, they contain a vast

amount of information helpful to the genealogist. For example, the locations and names of creeks, rivers, cemeteries, and churches are included on these exceptionally detailed maps. Buildings and houses are also shown. In addition, various characteristics of the terrain are included on these maps. Elevations are given, a helpful piece of information when attempting to determine the most logical route of migration. These maps are available primarily in two different scales - the 7 1/2 minute series which is 1:24,000 (one inch representing 2000 feet) and the 15 minute series which is 1:62,500 (or one inch representing nearly a mile). These maps are available for research at the Tennessee State Library and Archives for Tennessee only. The archives also possesses some of the earlier topographical maps, which are especially helpful to genealogists. See example p. 160 from Cheatham County.

Purchasing a topographical map is basically a two step process. Request a map index to the state of interest. Before ordering a map, determine from the map index the name of the desired map.

Maps Sales and Service, 1200 Lebanon Road, Nashville, TN 37210 stocks topographic maps for Tennessee and surrounding states and can normally provide fast service. Maps for other states may be ordered. Maps are currently priced at \$2.50 per map and the index to them is provided free of charge. If you know the precise location that you want, you may call them at 615-242-3388 to order maps and bypass the index step.



Topographical maps can also be purchased for all states through the U. S. Geological Survey, 1200 South Eads Street, Arlington, VA 22022 or, for Tennessee, through Tennessee Division of Geology, Department of Conservation, 701 Broadway, Nashville, TN 37243-0445. Maps are currently priced at \$2.75 and the index is \$1.

A book entitled Place Names in Tennessee published by the Tennessee Division of Geology is a guide to the locations found on these topographical maps, arranged alphabetically by county.

Maps of individual counties can usually be purchased in the county of interest, often in the recorder of deeds or tax assessor's office. Two different sets of maps have been published for Tennessee in book form and are also available at nominal price through various commercial sources. These are Tennessee County Maps, which includes reproductions of current county road maps and Tennessee Atlas & Gazetteer, which is topographical maps. However, it should be noted that these topographical maps are scaled 1:150,000, so they are not nearly as detailed as the above mentioned maps.

Copies of most maps in the collection of the Tennessee State Library and Archives can be purchased. Xerox copies are available for small maps at minimal cost and graphic prints can be made of larger maps. Cost of the demographic maps ranges from \$28 to \$84. Inquiries should be directed to the Manuscript Room, Tennessee State Library and Archives, 403 7th Avenue North, Nashville, TN 37219. Please do not send money.

Plat and parcel maps showing land ownership are worthy of mention. In public land states, plat maps identify the owners of land in a county at a given time. Tennessee is a state land state and does not have plat maps of the type found in public land states. Although in some portions of Tennessee, particularly in the west, you will find townships, ranges and sections mentioned in deeds, it is often difficult to find maps which identify those legal boundaries. Even if you are able to locate such a map, land owners are usually not identified. One notable exception to this rule is the Ocoee and Mountain Districts of Tennessee. These maps are available at the Tennessee State Library and Archives and identify land owners in varying degrees.

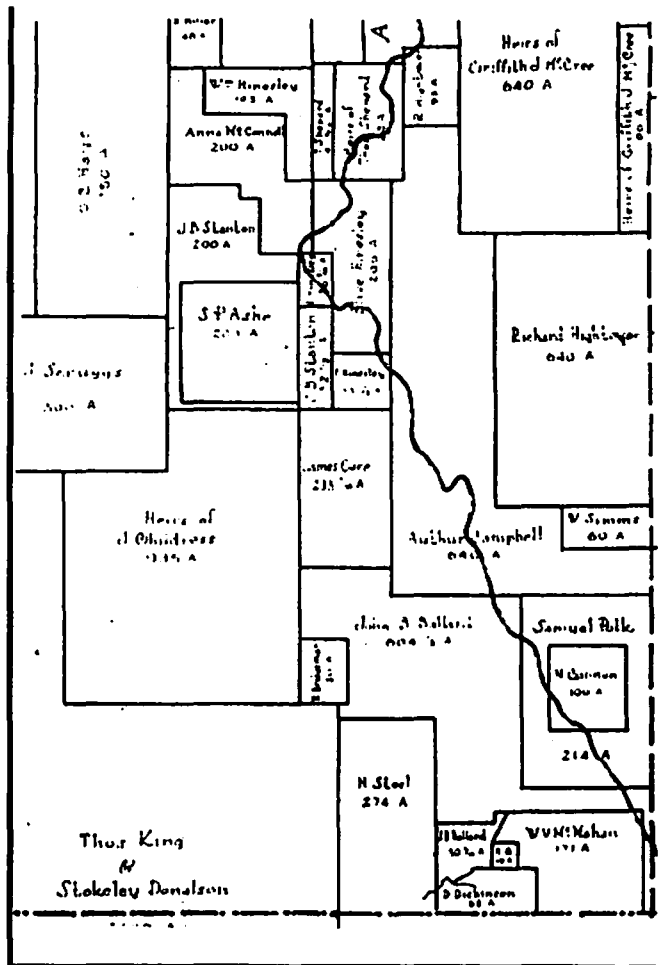
A typical land ownership map in Tennessee is map #1944 which identifies the parcels of land but does not identify owners of that land. See illustration at left.

Map #2548 for Haywood County is a rare exception. It was drawn in 1927 and identifies the original land owners for the entire county. See illustration above right.

Courthouses have current parcel maps on Tennessee land for taxing purposes, but these do not date from a time period that would be helpful to most genealogists.

PRACTICAL APPLICATIONS

In response to a question from Barb Sistler - Have you ever made a really exciting genealogical find through the use of maps?



#2548

Yes, on many occasions. Some years ago I was trying to locate all of the granddaughters of Henry Head of Sumner County in an attempt to identify Keziah Head who was born 14 January 1828 in Tennessee. Henry's son Tavenah Head migrated from Sumner County to Kentucky where he died about 1876. I visited the local courthouse and identified the land where Tavenah had lived. A map enabled me to pinpoint the location of the property. I drove out to see it and located a descendant, who provided me with a copy of family material from the Bible. Talk about highs and lows! My heart sang when I saw those names and birth dates and dropped with a thud when I realized that Keziah wasn't among them.

Marriages, Births and Deaths relating to Tavenah Head

Marriages

Tavenah Head & Polley E. Smith 7 September 1820
Tavenah Head & Frances G. Wetherhead 21 December 1841
Philemon Davis & Martha E. Head 15 December 1842
William H. Head & Elisabeth Foster 8 November 1849
Thomas J. Brooks & Mary (R. or B.) Head 8 April 1856
John N. Head & Martha A. Yarbrough 23 December 1856
Thos. E. Head & Ophelia A. Beauchamp 15 November 1859
Tavenah Head & Virginia E. Horsley 12 December 1860

Births

Tavenah Head 20 December 1797
Polly W. Smith Head consort of T. Head 1 June 1800
Frances G. Head cons. of T. Head 28 December 1804
Martha E. Head 3 August 1821
A son of T. Head
Polley Head, born dead, 16 July 1823
Elizabeth S. Head 13 August 1825
William H. Head 20 November 1826
Clinton S. Head 3 May 1828
John N. Head 23 June 1830
Thos. E. Head 14 March 1835
Mary R. Head 30 December 1836
Philemon Davis 28 January 1821
Tavenah E. Davis 3 January 1843
Mary E. Davis 2 March 1844
Henry (M. or K.) Davis 16 December 1846
Orietta Davis 19 September 1848
Clinton H. Davis 23 June 1850
Mortimer I.? Davis 6 March 1852
John W. Davis 16 November 1854
Arrabelle Brooks 22 March 1857
Charles Brooks 25 ? 1858
Thos. Edwards son of Thos.E. & Ophelia A. Head
26 August 1860

Births - continued

Mary Elizabeth dau of John N.& Martha A. Head
25 October 1857
William Thomas Head was born...
Mary E. dau of William H. & Elizabeth Head was born...
Frances S. Head was born...
Martha A. Head was born...

Deaths

Elizabeth S. Head 16 February 1848
Clinton S. Head 1 April 1848/9?
Martha E. Davis 5 April 1855
John W. Davis ? March 1855
Mary E. Davis 29 November 1857
Clinton H. Davis 30 November 1857
Arrabelle Brooks 5 January 1858
Charles Brooks 20 September 1858
Mary B. Brooks 27 October 1858
Frances Head wife of Tavenah Head 1 July 1860.

The above material used by permission of Dr.
Carmen Finley, 4820 Rockridge Lane, Santa Rosa, CA 95404.
Any information on Keziah Head, whose ancestry remains
unknown, would be gratefully appreciated.

SELECTED BIBLIOGRAPHY

- Fullerton, Ralph O. Place Names of Tennessee, Nashville, Tennessee, State of Tennessee Department of Conservation, 1974.
- Morris, Eastin. The Tennessee Gazetteer, (1834; rpt. Nashville: The Gazetteer Press, 1971).
- Puetz, C. J. Tennessee County Maps, Lyndon Station, Wisconsin 53944, no date. Currently priced at \$14.00 [also available through Byron Sistler and Associates. PO Box 120934, Nashville, TN 37212].
- Simmons, Don. Post Offices in the United States 1876, Melber, Kentucky, Simmons Historical Publications, 1986.
- Tennessee Atlas & Gazetteer. DeLorme Mapping Company, PO Box 298, Freeport, Maine 04032, 1989. Currently priced at \$12.95 plus \$3 shipping.
- Thorndale, William and Dollarhide, William. Map Guide to the U. S. Federal Censuses 1790-1920, Bountiful, Utah, American Genealogical Lending Library.

DEMOGRAPHIC MAPS FOR TENNESSEE COUNTIES

Bedford 1878
Giles 1878
Hamilton 1900
Haywood 1878
Knox 1895

Madison 1877
Marshall 1899
Maury 1878
Montgomery 1877*
Rutherford 1878**

Shelby 1888
Sumner 1878
Williamson 1878
Wilson 1907

* Map in color is available from Clarksville - Montgomery County Historical Museum, PO Box 383 Clarksville, TN 37040-0383 cost about \$10.

** Map available from Rutherford County Courthouse Annex, Murfreesboro, TN for about \$5

The following is a family sketch written by Elle White McClanahan after Dr. McClanahan's death in 1949, and contributed by Mrs. Gail M. Holman, granddaughter.

DR. ALBION AMZI MCCLANAHAN

Dr. Albion Amzi McClanahan was born July 17, 1860. The place of birth was a little house on the "lower eighty" in Graham Township, Jefferson County, Indiana. It was the year which saw the beginning of the Civil War, which soon was to take his father away from home and family. These war years were right hard for Grandma, left with the responsibilities of the farm, her only helper being Cyrus, the eldest son about twelve years old. In after years, when Grandpa would talk of experiences in "the service" she was not interested.

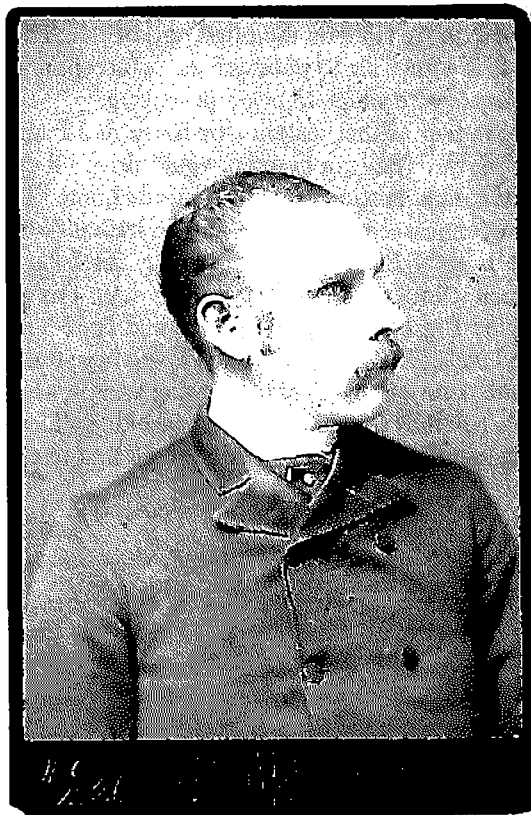
By hard work, economy and thrift they managed a good living on the rocky farm. Here "Amzy" grew up helping with chores, fishing in Walton's creek, which ran through the place, trapping rabbits etc. Also attending the little school house on the hill across the creek. When the boys were in their teens they were fortunate to have an outstanding teacher, Professor Blum who tried their abilities and encouraged them in getting an education. About this time they bought the "upper eighty" of Dudley Walton, and moved into the brick house, Grandma took care of Uncle Dudley the rest of his life.

Three McClanahan brothers, Harvey, George, and William lived on adjoining farms. Each one had two sons, near the same age, and all grew up together. Uncle George's sons, Hill and Russell and Harvey's two, Will and Amzy were especially chummy, and this brotherly regard continued as long as the quartette lived. They all had good singing voices, and their greatest delight was singing together. Their fathers were good singers and the boys were brought up singing together.

On visits to the old neighborhood the four delighted to hunt and fish together and to sing together. They are all gone now, but I imagine I can hear again their beautiful voices blended in exquisite harmony.

A. A. and Russell were inseparable and what one did the other did. They decided to try teaching school and in preparation attended Teachers Normal School in Lexington, Indiana. They came home for week-ends, and on Monday morning Grandma and Aunt Melissa would pack a box of food to last the week. I don't know what mode of transportation they had, whether they walked, or possibly rode the train to Teachers. But they got their certificate and began to teach.

A distant relative of Mother Mac's, Jilson Whitsitt often rode by in the evening to stay for supper, or perchance spend the night. He was a singing teacher. A. A. decided this might be a break for him so he asked Mr. Whitsitt to write out for him some lessons. This he did. Twelve lessons for a dollar, our young music teacher had only fifty cents. This he paid, and another fifty due. The next time Mr. Whitsitt came by and stopped for supper Amzy felt he



must pay the debt. But he hadn't a cent. The following colloquy took place, "Pap I owe Jilson fifty cents and I think he wants his money, and I haven't got it, could you lend me a half dollar?" Pap could and did, and thus we came into possession of the coveted lessons. These same lessons were brought to Tennessee and were the basis of the singing schools here. I was accused of destroying them, of course I did not such thing knowingly. Anyway they are lost to posterity.

When the singing schools started they went together. They taught in the towns of southern Indiana, Illinois and Ohio. In Indiana they formed a friendship with a young dentist, Dr. Robert Care. Dr. Care later opened an office in Harrison, Ohio, and invited his friends to come to Harrison and teach singing. This he and Will did and had several classes within a radius of a few miles of Harrison, aided and abetted by Dr. Care.

It must have been his association with Dr. Care which gave him the idea of studying dentistry. As a beginning he spent a year in Madison, in the office of Dr. Wall. At the end of the year the young dentist joined fortune with another embryo dentist, Dr. Frank Ferrell. The two acquired a buggy and gave Father McClanahan a note for \$75.00 to pay for a horse. They hitched old Tom

to the buggy, loaded their belongings, and set out for Tennessee, the land of opportunity.

During the war Grandpa had followed General Thomas through Tennessee. As I before intimated, he liked to talk of all he had seen, heard, and experienced. He told of Nashville, Gallatin, Murfreesboro and Chattanooga, until they became household words. Our adventurers decided to make Gallatin their first port of call. Their first stop was in Louisville to purchase a few forceps and other instruments with which to begin practicing.

A trip of that distance by horse and buggy took several days. They young men would drive all day, and spend the night at some friendly roadside home. The first night in Tennessee was with Mr. and Mrs. Elias Armstrong on the L & N Pike. Mr. Armstrong had been an old fashioned school teacher in his younger days. His wife was Josephine Bigsbee an Aunt of Grip and Izzie True. Of course Uncle Elias was curious to know where the travellers came from, where they were going and on what business. When they told him they were seeking a location to practice dentistry, and had in mind to go first to Gallatin,

he said, "Gentlemen," Cross Plains a few miles west of here is a fine town, and I suggest that you go and look it over, and to Cross Plains they went and remained.

After settling in Cross Plains Dr. McClanahan practiced dentistry and attended Vanderbilt University. He received his Doctor Dental Surgery Degree on July 20, 1889. On May 13, 1899 he received a Doctor Dental Surgery Degree from Northwestern University.

Dr. McClanahan married Miss Ella White on February 21, 1889. They had the following children:

Wilbur White McClanahan m. Iva Hardore Baggett
Nellie Gladys McClanahan d. an infant
Rev. Albion Amzi McClanahan, Jr. m. Mildred Trenary
Mary Eleanor McClanahan m. James C. Trefz
Emma Cornelia McClanahan m. (1) Rayburn Pitt
(2) Dr. John C. Williams
Joe Harvey McClanahan m. Ruth Glover

This sketch was contributed by Mrs. Gail Holman. Her father is Joe Harvey McClanahan who still lives in the



Class + Officers.

R. M. WALKER, President,	ILLINOIS.
O. C. FARRISH, Vice President,	ALABAMA.
S. H. MCKEE, Secretary,	GEORGIA.

Valedictorian.

MARK.	ALABAMA.
-------	----------

Committee on Arrangements.

H. DE-ODRY,	LA.	A. A. McCLANAHAN,	IND.
ORR,	VA.	J. O. McNEELY,	PENN.
GULESE,	MISS.	J. C. GOODWIN,	N. C.

Committee on Invitations.

ETTNER,	ALA.	J. C. McDAVITT,	KY.
NOR,	MICH.	O. M. HUESTIS,	DAR.
	TEXAS.	J. O. TEMPLETON,	TENN.

Reception Committee.

RMAN,	IND.	J. E. DUGGER,	LA.
LIAN,	N. Y.	C. L. GILLESPIE,	TENN.
ELDS,	LA.	W. L. JONES,	MISS.
	ALA.	J. C. GRIFFITH,	OREGON.

Graduating Class.

ALA.	ROBERT ETTNER,	MICH.
ALA.	A. A. McCLANAHAN,	IND.
TENN.	J. C. McDAVITT,	KY.
ALA.	S. H. MCKEE,	GA.
TENN.	J. O. McNEELY,	PA.
LA.	D. K. MURCHISON,	TENN.
ALA.	W. NORCON,	MICH.
KY.	D. F. ORR,	VA.
N. C.	D. F. ROBINSON,	ALA.
ALA.	J. O. TEMPLETON,	TENN.
MISS.	J. L. TICHENON,	TENN.
KY.	A. W. TROTTER,	TENN.
N. C.	R. M. WALKER,	ILL.
ALA.	J. C. WATSON,	KY.
ALA.	O. M. HUESTIS,	DAR.
MISS.		

United States Internal Revenue,

Collector's Office, 5 District, Tennessee,

Sept 12

1891.

A A McElanahan Esq,
Deputy Collector
Springfield Tenn

Dear Sir,

Your letter of Sept 11 /91 informing me of your intention to resign the Office of Stamp Deputy on the 20th inst, is at hand and in reply thereto will say that I very much regret your action, as your business with this Office has been altogether pleasant both Officially and personally and I hope that I have never given you any occasion to regret your connection with this Office

I am yours truly

D. H. M.
Collector

home place that his father, Dr. McClanahan, bought in 1897 in Springfield, Tennessee. All the other children of Dr. McClanahan and Ella White are deceased. His living grandchildren are: Wilbur White McClanahan, Jr., Albert Baggett McClanahan, William Harvey McClanahan, Joe Harvey McClanahan, Jr., Ella White Bellflower, Gail M. Holman, and Jamie Trefz.

Many of our members will have known Mrs. Jean Durrett, dec'd., a professional researcher. She is responsible for Mrs. Holman's interest in genealogy. Gail wants any interested readers to know that Mrs. Durrett's collection of research is housed at the Gorham McBane Library in Springfield, TN.

Dr. McClanahan was a Stamp Collector for the Internal Revenue Service. See accompanying illustration of form, p. 143. This stamp was a tax levied on liquor and tobacco, originally collected to pay off debts from the Civil War.

— NAGGING —

It's a dirty job but someone has to do it.

For those of you who skip the editor's page, and may miss the note on the back cover --

This is the last issue of *Middle Tennessee Genealogy* for the 1990-91 year.

Renew now -- there's a form handy stapled in the center of this issue.

Think about it -- a lot of extra work and expense are involved in reminders and keeping track of late renewals. The board would much rather spend the time and money on basics that improve the quality of the society and the quarterly.

THE ORIGINAL SURVEYOR'S RECORD BOOK, 1836-1887. COFFEE COUNTY, TENNESSEE

by Dorothy Williams Potter

COFFEE COUNTY was formed in 1836 from portions of Franklin, Warren, and Bedford Counties. Entry applications were made as early as 1819 for land in what is now Coffee County. Many of these land entries were situated on larger, pre-existing grants which were never taken up e.g., the Blount Lands. Prior to 1836, the land was surveyed and recorded in the records of the respective older counties, but after that date, all the surveys were recorded in the *Coffee County, Tennessee, Surveyor's Record Book, 1836-1887*.

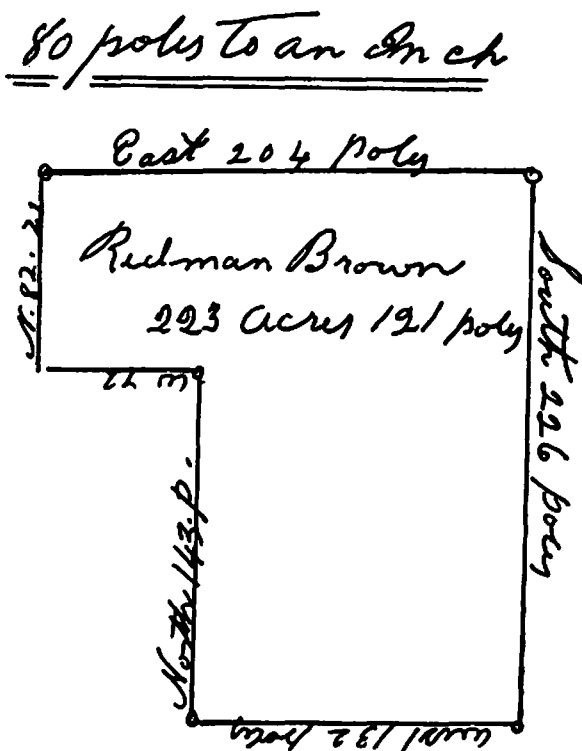
In 1976 permission was received from the county officials to make a full transcription of the original book. This was especially important, for this fragile and little-known volume had not been microfilmed and was in an assortment of pieces. One should note that there is microfilm of a *Surveyor's Record Book* in the Tennessee State Library and Archives. However, the entries herein will not coincide with this microfilmed version.

The disagreement arises because the book microfilmed prior to 1976 was actually a late 1880's copy of the original *Surveyor's Book* and it contained some serious errors.

Hence, the *original* book was used for the compilation published in 1976 by the present writer.¹

All of the surveyor's plats in the original manuscript were carefully drawn to the same exact size in the published book, and representative plats from that book are reproduced here.

2944
a cry
5000/100



Title to Vacant Land

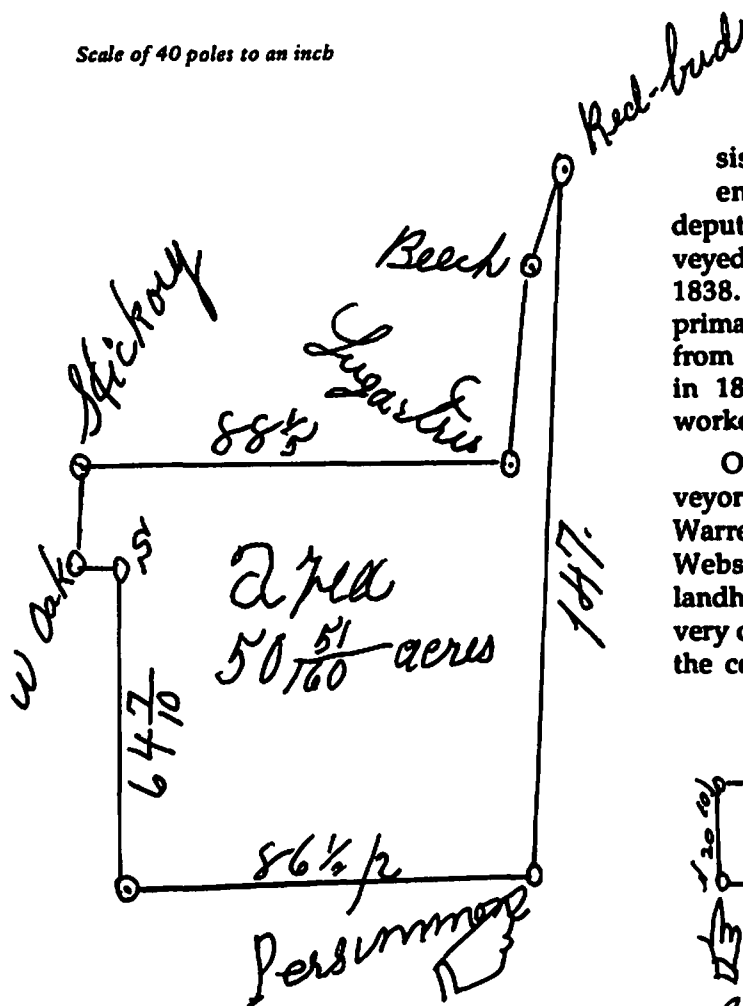
The process of gaining title to vacant land went from the requested *entry* (1) to the *warrant* (2) which was given to the surveyor. He then took two chain carriers and made a *survey* (3) of the area by laying off the boundaries and drawing a scaled plat. Finally the *deed* (4) culminated the entire process.

The purpose of the entry was to determine if there was a previous claim to the property. If there was, then a caveat might be noted. One will note that there could also be a considerable lapse of time between entry and perfected deed.

Above: J. H. Webster's Entry No. 1732 dated Jan. 11th 1836

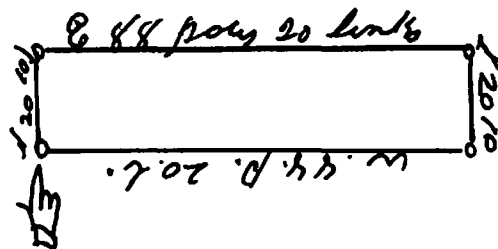
Left: Entry No. 545 for Redman Brown, 1855

Scale of 40 poles to an inch



of Coffee. By 1852 he was signing as principal surveyor of Coffee County. Lecil Bobo had been designated a deputy surveyor, although his work consisted mainly of laying out his own land entries from 1836 through 1845. Another deputy surveyor was George W. Durley, who surveyed a few Warren County entries from 1837-1838. M. C. Cass, a Deputy Surveyor who primarily surveyed Bedford County, issued entries from 1818-1841. G. B. Alexander began surveying in 1839, while J. W. Anderson intermittently worked during the period of 1841-1854.

Other men who also served as deputy surveyors during the busy years of 1836-1854 were Warren Waite, William M. Wallace, and Jonathan Webster. Jonathan Webster was a very large landholder in the County who, only through a very close vote in the State Legislature, lost having the county named for him in 1836.



Scale of 40 poles to an inch

Surveyors

The first Principal Surveyor in the present County of Coffee was John O. Brixey. The chain carriers that accompanied him on the surveying rounds were usually neighbors or family of the person for whom the land was being scouted. However, there were exceptions to this, e.g., for the month of April, 1837, Jarratt Gentry and William Thompson traveled with John O. Brixey as chain carriers on all the returned surveys for that period.

E. Keeling, a Deputy Surveyor of Bedford County in 1834, returned surveys during the years of 1836 through 1838 for the newly formed County

Above: Entry No. 24, dated 1885, for R. A. Webster

Right: Daniel Nelson's Entry No. 538, Jan. 1st 1855

Surveys

The following is a listing of the surveys for the years 1836 and 1837 only. These include the first two years of recording, and are given in the order of entry in the original Surveyor's book.

The initial before the entry number denotes from which county the entry was issued. However, one will note that some were not identified by county in the original book.

¹ Dorothy Williams Potter, *Original Surveyor's Record Book, 1836-1887, Coffee County, Tennessee*, (Tullahoma, Tennessee: DWP Publications, 1976). Tennessee State Library, F443.C65074.

Name	Entry Number*	Description
1836 Survey Date		
Walton Brixey	#1582	100 acres on head waters of Bradleys Creek
Wiley Mathis	W#4175	640 acres on waters of Hicory [sic] Creek
William Charles	F#2083	30-1/5 acres on head waters of Bradley Creek
John Charles	F#1958	50 acres on head waters of Bradleys Creek
Joab Howard	B#1715	62-1/2 acres on east Branch of Rileys Creek
Walton Brixey	C#14	50 acres on head waters of Bradleys Creek
Joseph Brown	C#8	50 acres on waters of Duck River
Matison Jones & Wilson Luck	#1-29	400 acres on Barren Fork of Duck River
Pleasant Jones	C#6	86 acres on head waters of Hickory Creek
George D. Sheril	F#1819	282-1/2 acres on waters of Duck River
George D. Sheril	F#2004	200 acres on waters of Duck River
Henry Eliot	F#2029	96-1/4 acres on waters of Duck River
Thomas Douglass	C#32	53-1/2 acres on Garrison Fork of Duck River
John H. Thower	F#1459	50 acres on west side of Brier pond Branch
John Bradshaw	#1675	600 acres on waters of Bark Camp Fork of Duck
Annereare Dubo-	F#1629	400 acres on Barren Fork of Duck River
Elizabeth Bowlin	F#1958	50 acres on head waters of Bradleys Creek
William F. Ricardson	C#7	209-1/4 acres on Duck River
Clabourn C. Starns	C#34	22-1/8 acres on Garrison Fork of Duck River
James Birks & Elias More	B#897	100 acres on Garrison Fork of Duck River
William Kuykendall	F#1902	50 acres on head waters of Bradleys Creek
William & Abram Kuykendall	F#107	500 acres on Bark Camp fork of Duck River
William & Abram Kuykendall	F#31	50 acres on Bark Camp for of Duck River
John Winton	C#40	11-7/40 acres on head waters of Hickory Creek
James Oliver	F#2054	80 acres on Barren fork of Duck River
Henry Bradshaw	F#1102	100 acres on Bark Camp Fork of Duck River
Henry Bickel	W#3546	70-1/5 acres on west fork of Hickory Creek
Kinchen Mathis	W#3799	79-1/4 acres on head waters of Hickory Creek
Andrew Paul & Allen Yowell	F#1809	1,000 acres on Bark Camp Fork of Duck River
John R. Beard	C#42	100 acres on Crumptions' Creek
Benjamin Perry	F#1818	200 acres on North fork of Bromboles Creek
John R. Beard	F16-8	200 acres on Cumptions Creek
John O. Brixey	C#13	200 acres on waters of Bradleys Creek
John O. Brixey	F#1925	100 acres on waters of Bradleys Creek
John Winton	C#39	14-1/4 acres on Hickory Creek
William B. Hicks	C#20	5,000 acres NE corner of old Stone Fort
Isabella F. King	C#18	5,000 acres NE corner of old Stone fort. "Returned"
Washington Britton	C#21	5,000 acres NE corner of old stone fort
George Wear	C#50	5,000 acres NW corner of Washington Britton's tract entry number 21
Saml. B. Kelton	C#51	5,000 acres NW corner of Wm. B. Hick's 5,000 acre tract
Phillip Marbery	C#61	5,000 acres SE corner of Wm. B. Hick's 5,000 acre tract
Robert Cain	C#64	5,000 acres beg. SE corner of Saml. B. Kelton's 5,000 acre tract
Alexander Blank	C#36	5,000 acres beg. SW corner of George Wear's 5,000 acre tract
Josephes Moore	C#67	5,000 acres, beg. SE corner of Robert Cain's 5,000 acre tract
Jordon King and Jarratt Gentry	C#68	5,000 acres on waters of Duck River

* B = Bedford; F = Franklin; R = Rutherford; C = Coffee; W = Warren.

Name	Entry Number	Description
Gray W. Haggard	F#1850	500 acres Curtises Branch of Barren fork of Duck River
Jordan King		
Daniel Wiser	B#1637	49 acres & 93 polls on Noahs fork of Duck R.
James Oliver	F#2054	147-3/4 acres on Barren Fork of Collins River
1837 Survey Date		
Francis Bell and		
Josiah F. Morford	C#71	10,000 acres on waters of Bradleys Creek
Peter Arnold	C#70	187-1/2 acres on Bradleys Creek
Daniel Harpool, Samuel Edmonson,		
Pleasant Henderson	C#11	1,123 acres NW corner of Harpool's 157 acre tract
Samuel Edmonson	C#45	5,000 acres on head waters of Bradleys Creek
Hiram H. Harpool	W#3594	100 acres on waters of Hickory Creek
Thomas Hopkins	#307	50 acres on head waters of Bradleys Creek
L. D. Mercer	C#59	5,000 acres on Duck River, beg. SW corner Isabella F. King's 5,000 acre tract
Isaac Street	C#36	100 acres on Elk River
Wiley Mathis	C#28	200 acres on head waters of Hickory Creek
J. Patison Hodge	B#1727	29-1/4 acres on Rileys Creek of Duck River
Nelson Adams	B#1716	20-13/20 acres on Rileys Creek a north branch of the Barren fork of Duck River
Josiah F. Morford	C#80	5,000 acres on Bradleys Creek of Elk River
Frederick H. Stump		
& Elias M. Murphree	F#1726	5,000 acres on Duck River
Frederick H. Stump		
& Elias M. Murphree	F#1727	5,000 acres on Duck River beg. at Stump & Murphree's 5,000 acres tract Entry No. 1726
Isaac Earthmon	F#1728	5,000 acres SW corner entry number 1727
Robert Lanear	F#1729	5,000 acres SW corner of entry number 1728
Jane Angelina King	C#19	5,000 acres NE corner of Old Stone Fort
Uriah Sherrill		
& Adam Sherrill	F#1653	198 acres on Bradleys Creek
Adam Sherril	F#1456	100 acres on Bradleys Creek
Thomas Collins	F#1664	300 acres on waters of Little Duck
Joseph Pea	F#2108	100 acres near 150 acre tract which the Pea now lives on
Jonathan Webster	B#1413	640 acres on Noah fork of Duck River
Jonathan Webster	C#23	28-3/8 acres on Noahs fork of Duck River
Thomas Hopkins, dec'd,	W#3981	500 acres on waters of Hickory Creek
Samuel Sherrill	F#1626	150 acres on Bark Camp fork of Duck River
Daniel Wiser	C#10	11-3/4 acres on Noahs fork of Duck River
Eli Eaton	R#1218	20 acres on head waters of Stones River
Samuel Eoff	R#1542	50 acres on East fork of Stones River
John Frayshur	W# -	150 acres on Wet Creek
Elijah Atha	F#2024	450 acres on Barren fork of Duck River
John B. Rogers		
Archibald C. Rogers	W#384	50 acres on Duck River
John B. Rogers	W#184	200 acres on waters of Duck River
John B. Rogers	W#118	200 acres on waters of Duck River
John Brown	F#1616	200 acres on Barren fork of Duck River
Samuel Farmer	C#81	71-1/4 acres on waters of Elk River
Reason Felps	F#2073	250 acres on Elk River
John O. Brixey		
& James Yell	C#49	433 acres on Spring Creek of Duck River
Lecil Bobo &		
James Davis	F#1989	5,000 acres on Duck River

Name	Entry Number	Description
1837 Survey Date, cont.		
Ephraim Cate	C#73	22-1/2 acres on head waters of Bradleys Creek
Nancy Purdom	F#2089	668-1/2 acres on Bradleys Creek
Thomas Boid Junior & Thomas Edmons	W#2926	2,000 acres on Duck River & Barren Fork of Collins River
Thomas Hopkins	F#752	300 acres on Duck & Bradleys Creek
Lilbern Butler	C#66	200 acres on Barren fork of Duck River
Thomas Craddock	C#90	5,000 acres on waters of Elk River
John W. Ford	C#94	5,000 acres on Duck River
Robert Green	C#93	5,000 acres on waters of Elk River
Christopher H. Stump	C#88	5,000 acres on Elk and Duck Rivers
Robt. B. Turner	C#91	5,000 acres on waters of Elk River, the SE corner of Thomas Craddock's 5,000 acres tract No. 90
R. H. Berry	C#92	5,000 acres on Elk River, beg. Robt. B. Turner's 5000 acre tract No. 91
Samuel B. Barrell	C#89	5,000 acres on Duck River
Wm. B. Castleman	C#96	5,000 acres on Elk and Duck River
Alexander Ensey	F#2046	320 acres on Wet Creek of Barren Fork of Duck
W. B. Sheppard	C#97	5,000 acres on Duck River, NE corner of Robt. B. Castleman's 5,000 acre tract
George W. Durly	C#98	5,000 acres on Duck River
James P. Grundy	C#48	5,000 acres on north fork of Bumbalows Creek
Joel H. Webster, Goldman Green, Lucretia V. Webster, Johnathan S. Webster, Virginia W. Webster	W#3215	5,000 acres on Barren Fork of Duck River
Joel H. Webster, Goldman Green, Lucretia V. Webster, Virginia W. Webster, Johnathan S. Webster	F#1643	5,000 acres on Barren Fork of Duck River
Samuel Wright	W#3262	5,000 acres on waters of Hickory Creek
Johnathan Webster, John Stump, Nimrod Murphy	F#1725	5,000 acres on Elk River
Lecil Bobo	F#1772	900 acres on Comptons Creek of Duck R.
Thos. G. Allison	C#102	5,000 acres in Coffee & Franklin counties, waters of Elk R.
Richard Allison	C#104	5,000 acres in Coffee & Franklin on Elk River, NE corner of Thomas G. Allison's entry
Johnathan Webster	F#1724	5,000 acres on Barren fork of Duck River
James T. Holeman	C#107	5,000 acres on Elk River
Jessee J. Everett	C#108	5,000 acres on waters of Elk River
Joel H. Webster, Goldman Green, Lucretia V. Webster, Virginia W. Webster, Jonathan S. Webster	B#1414	5,000 acres on Barren fork of Duck R.
Jonathan Webster	B#1384	640 acres on Noahs fork and the Barren fork of Duck River
Rice F. Ross	C#46	100 acres on Bark Camp fork of Duck R.
William G. Hale	C#110	100 acres on Bark Camp Fork of Duck R.
William Montgomery	B#110	60 acres on Normans Creek of Duck River
Garlant Ayres	B#1761	50 acres on Normans Creek of Duck River
Charles Whitehead	F#1689	300 acres on Bradleys Creek
John F. Morrison	F#N2.105(?)	33-1/3 acres on Bradleys Creek
William D. Purdom	W#3556	161-1/2 acres on Hickory Creek
John K. Wells	C#77	370 acres on west fork of Hickory Creek
John L. Goodman	F#1086	100 acres on Barren fork of Duck River
Lecil Bobo	F#1990	5,000 acres on Duck River
Grey W. Haggard	B#1663	200 acres on Barren fork of Duck River
Orrren Embry	F#1837	300 acres on Bradley Creek of Elk River
David Montgomery	F#19040	100 acres on Dry fork of Rock Creek

Family Register.

Davidson, Nashville, Tenn.

Mattie Murray Hope (Daughter
of R K Hope and Ida Hope) was

Born on the 29 day of November 1882

Emiline Hope Daughter of R K and Ida

Hope was Born the 4 day of Sept 1882
Davidson - Nashville Tenn.

Florence Guild Hope Daughter of R K and Ida

Hope was Born on the 10th day of March 1885
Davidson, Nashville Tenn.Allie T Hope Daughter of R K Hope and
Ida Hope was Born on the 21 day of February
1890 Davidson, Nashville Tenn.

1895 Davidson, Nashville Tenn.

John Hope (Daughter of R K)

Born on the 20th day of July 1895

Davidson, Nashville Tenn.

This Bible now belongs to Thomas M. Green, 2111 Laurel Springs, Kingwood, TX 77339. He believes this Bible belonged to Richard and Ida Hope; however, John B's children are all listed as well as Richard's.

HOPE BIBLE RECORDS

The Holy Bible
Old and New Testaments
Imprinted at the University Press
Imported and Sold by
W. W. Harding, 630 Chestnut Street
Philadelphia, 1870

Family Register

John B. Hope and Emiline Watson was married Feb-15-1846
John B. Hope was born Sept-24-1820
Emiline Watson Hope was born Oct-4-1829
Sarah Francis Hope was born Dec-9-1847
Richard King Kade* Hope was born June-2-1849
Samuel Adam Hope was born Feb-25-1851
Charlotte Temple Hope was born Sept-7-1852
Narcissa Tennessee Hope was born Dec-15-1854
Liliette Hope was born March-2-1857
Charles Andrew Hope was born May-14-1859
Martha D. Hope was born May-11-1861
Georgia Annie Forest Hope was born April-1-1864
James B. Hope was born Oct-7-1866

Deaths

John B. Hope Died--Sept-9-1868
Samuel Adam Hope Died Oct-17-1877
Georgia Annie Forest Hope Died Jan-28-1882
Emiline Watson Hope Died March-14-1882

Samuel Adam Hope Son of John B. Hope and
Emiline Hope Departed this life on the 17 day
October in the year of 1877

Births

Davidson Ct. Nashville Tenn.
Mattie Murray Hope Daughter of R K Hope and Ida
Hope was Born on the 27 day of November 1879
Emiline Hope Daughter of R K and Ida Hope Was
Born the 24 day of Sept 1882 Davidson -
Nashville Tenn.
Florence Guild Hope Daughter of R K and Ida
Hope was Born on the 10th day of March 1885
Davidson. Nashville Tenn.
Allie T. Hope Daughter of R K Hope and Ida Hope
Was Born on the 24 day of February [of our
Lord] 1890 Nashville Tenn
1895 Davidson, Nashville Tenn
Ida Kate Hope Daughter of R K & Ida Hope was
born Sept 20th 1900 Death Oct 10-1902
Davidson Nashville Tenn
[#William Bates Hope born 21 December 1892,
Nashville, Tenn]
[#Thomas S. Hope, born 15 October 1895, Nashville,
Tenn]

Marriages

R. K. Hope and Ida Wilkinson was married February
3, 1876

*Kincade is the maiden name of his Gt. Grandmother.

#This part of the page was torn off which gave the births of William B. & Thomas S. sons of R. K. and Ida Hope

SARAH HENRIETTA GREEN MORTON

Daughter of Sherwood Martha Christmas Green

by Thomas M. Green

Sarah Henrietta Green was born in 1810 in Williamson County Tennessee. She married Solomon G. Morton in Nolensville, 22 September 1825. The 1840 Davidson Co. census lists two boys, ages 01-5 yrs and one girl, 5-10 yrs. The 1850 Davidson Co. TN census lists a son John H. age 18 yrs and a son Joseph E. age 2 yrs. A daughter, Mary J. age 17 yrs, is on the Williamson Co. census married to James T. Scales. Evidently one son died between 1840 and 1850. Living also in the household of Solomon H. Morton, age 47 yrs, in the 1850 census was his wife, Sarah H., age 41 yrs and John Morton, preacher, age 73 years, relationship unknown.

Solomon G. Morton died in May 1859. In his will, recorded in Rutherford County, he names his wife Sarah and three children, John H., Joseph E., Mary J. Scales, and a grand-daughter Cora Scales. He also names his brother-in-law James M. Green to be an advisor to his wife. His obituary was published in *The Tennessee Baptist* 18 June 1859.

Sarah Henrietta died 10 October 1883, in Nashville. She was living with her son Joseph and his family at this time. The Davidson Co. death record shows she was to be buried in Murfreesboro. There is an old Morton Cemetery located between Smyrna and Murfreesboro. It has been desecrated and there are only two stones left standing. One is that of "Joseph Morton, Born 1778, Died 1829" and the other for "James B. Morton, Lt. 4th Regt. Va. Militia, Revolution War, 1758-1808." About eighteen or more graves may have been there at one time. No record was found to prove who was buried in this Cemetery.

Joseph E. Morton was born in 1848, Davidson County. He married Francis (Fanny) King, daughter of Benjamin and Susan Matthews King 2 December 1868 in Davidson Co. To this marriage were born six children. They were Mattie Lou, b. 1869; Catherine, b. 1871; Percy, b. 1873; Solomon, b. April 1877; James, b. September 1883; and Addie, b. October 1886. Joseph died 19 February 1886 in Nashville. The Davidson Co. death record shows that he was buried in the "country." It might be assumed that this was in the Morton Cemetery in Murfreesboro where his parents were supposedly buried.

The 1910 census of Davidson County, Tennessee shows that Francis Morton was living with her daughter Addie (Adelaide) and her husband George R. Martin. They had two children, George E. age 1 year, and Mary C. age 5 months. The 1917 Nashville City Directory lists George R. and Addie Martin living at 310 McMillin Ave.

Francis is not listed in this Directory. She might have died by this time or be living with one of her other children. Further research of Davidson County marriage, death, birth and cemetery records might uncover information on the other children of Joseph Edward and Francis Morton since the 1910 census reveals that six of their children were still living.

John H. Morton was born in 1831 in Rutherford County and died in Dallas, Texas, July 18, 1887. He "read medicine" under the supervision of Dr. James T. Scales who married his sister Mary J. Morton. The 1870 and 1880 census names his wife as Mattie L., born in Virginia. No marriage record could be found in Tennessee. Dr. John H. Morton was instrumental in organizing the Dallas County Medical Society in 1884, and was elected the first President on 12 April 1884. Since there are no children listed on the 1870 or 1880 census with him, it must be assumed that he never had any unless they were born between 1880 and 1888.

Mary J. Morton was born in 1833 in Rutherford Co. Tennessee. She married Dr. James Turner Scales 3 December 1849 in Davidson Co. and moved to Williamson Co. where he was practicing medicine. On the 1850 census, her brother, John H., is listed with them as "reading medicine." James was the son of Joseph G. and Francis Webb Scales. He died 9 August 1854, leaving his wife Mary and a daughter Cora. Evidently they were living in Davidson Co. at this time since this is where his will was recorded and probated.

Mary J. Scales married Thomas J. Massey 21 March 1861, in Rutherford County. The 1880 Rutherford Co. census records Thomas J. Massey, Mary J. Massey, a son Morton Massey, a daughter Cora Scales, and his mother-in-law, Sarah H. Morton, living in the same household. Mary J. Massey Morton [sic] is listed as a widow in the 1880 census living with her brother John H. Morton and his wife Mattie L., living in Dallas, Texas. Evidently her husband Thomas J. and son Morton Massey had died. In a letter from Dr. John H. Morton to his cousin Joseph E. Green, written in 1881, he writes that his "sister has married again and living at Wootens Well near Bremond, Texas."

Cora L. Scales was born 20th May 1851, in Davidson Co. Tennessee. She married Amos W. Rankin 8 October 1872, in Rutherford Co. He was born 3 May 1848, the son of A. C. and Mary Powell Rankin in Rutherford County. Cora and Amos had five children: Amos Walter Rankin Jr.; J. W. Rankin; Cora Lee Rankin born June 1882; Mary Rankin born 1898; and Robert Thomas Rankin born

1888. The cemetery records of Spring Hill Cemetery in Nashville, Tennessee show Cora, Amos and three of the children buried there on Lot 55, Sec. "M." Cora died 11 June 1911, Amos died 6 August 1915, both in Nashville. Coralee Rankin Binsinger died 15 October 1970 in Louisville, Ky. She was survived by a daughter Sarah Wills of Daytona Beach, FL and a son, Robert Gibson of Nashville. Robert Thomas Rankin died 15 August 1946 in Cleveland, Tennessee. He was survived by his wife Elizabeth Shapard Rankin and two daughters, Rosemary Roberts and Patricia Rankin. The grave marker for Mary Rankin Gibson Fetters shows only "1921 - 1969." Buried also on this lot is Donald J. Craig III. His relationship to the others could not be found.

No contact has been made with any of the descendants of Sarah H. Green Morton. All information for the above names, dates and places was found in Census Records from 1830 to 1910,, Cemetery Records, Newspaper Obituaries, Rutherford, Davidson and Williamson County marriage records, Davidson County death records, and Virginia Bowman's book Williamson County Historical Homes and Sites.

"WANTED." Anyone having knowledge of any Greens, Mortons, Masseys who are related or connected to any of the above—Thomas Green would appreciate your contacting him.



BOOK REVIEW

by Shirley Wilson

Genealogical Deed Abstracts MECKLENBURG COUNTY, NORTH CAROLINA Books 10-14, compiled by Herman W. Ferguson. Soft cover, 8 1/2 x 11, 250 pp. Order from: Herman Ferguson, 600 Chad Drive, Rocky Mount, NC 27803 \$25.00 (NC residents add 5%).

Although the deed books abstracted cover the years 1778 to 1794, the earliest record is a grant dated 1757 and there are additional grants dated in the early 1800's. While the grants and deeds are primarily for land in Mecklenburg County, some of the grants were for land in Tennessee.

All pertinent material has been abstracted and each abstract assigned a number in this well organized and carefully prepared book. The index includes full names and places and references the abstract number, so that it is not necessary to search the entire page. Bold type has been used for numbers of important references (to grantees and grantors, etc.). To assist the reader in locating the land, the book includes a map, which shows the various creeks, churches and county boundaries.

Mr. Ferguson has created an outstanding book of abstracts. Worth every penny of its modest price if you have roots in or around Mecklenburg County, this book is a worthwhile purchase solely as a superior example of how to prepare and publish record abstracts.

* * *

JEAN/JEANS IN THE CIVIL WAR

Lincoln County, Tennessee Confederates

by Royleta C. Malone

David JEAN, Jr. was a Pvt. in I Co 44th Tennessee Infantry, C.S.A.; later a Corporal in Co. A 44th Consolidated Infantry. He enlisted 7 Dec 1861. He was captured at Petersburg, Virginia 2 April 1865. As a prisoner of war he was sent to Fort Delaware. He took the oath of allegiance in May 1865, after the surrender and was released 7 May 1865. He received a Tennessee Confederate pension from Nov. 1905 until his death in 1919. David was born 19 Sep 1845 in Lincoln County, the son of David JEAN, Sr. He is buried in Lone Oak Cemetery in Lewisburg.

Joseph JEAN was a Pvt. in A Co 44th Consolidated Infantry, C.S.A. He enlisted 14 Nov. 1862. On 1 July 1864, he was sick at a hospital in Richmond, Virginia and died there soon after. A quartermaster's receipt listed \$5.00 remaining with Joseph Jean on a register of effects of deceased soldiers. He is probably buried in Hollywood Cemetery in Richmond. His widow Catherine McClure JEAN received a Confederate pension from TN from 1906 until her death in 1912. Joseph JEAN was born in 1834, the son of David JEAN, Sr.

*Wyatt JEAN was a Pvt. in A Co 44th Consolidated Infantry, C.S.A. He enlisted 14 Nov. 1862, the same day as his brother Joseph JEAN. Wyatt served until July 1863. He was born 9 Sep. 1839 in Lincoln County, the son of David JEAN, Sr., died in Fannin County, Texas 1 May 1904, and is buried in the Dial Cemetery near Honey Grove.

Wiley JEAN enlisted 2 Dec 1862 as a Pvt. in Capt. A. L. Huggins' Light Artillery Company. He is listed as both Wiley JEAN and Wiley JEANS in "Tennesseans in the Civil War." He was in Freeman's Battery which served under General Nathan Bedford Forrest until the Battle of Chickamauga. Wiley JEAN was captured at Spring Hill, near Franklin, TN 10 Apr 1863, and contracted disease during prison in Louisville, Kentucky. He was paroled from there 10 May 1863. Wiley was born 1 Dec 1825 in Lincoln County and died there 18 July 1905. He was probably the son of David JEAN, Sr.

Another Wiley JEAN was a Pvt. in A Co of 41st Infantry. He was born 24 Oct 1837 and died 9 Apr 1911.

He is buried in the Kennedy-Thomison Cemetery in Lincoln County. He was probably Wiley H. Jean, the son of John JEAN and his wife Ann Shaw.

Uriah JEAN was also a Pvt. in A Co 41st Infantry. He enlisted 4 Nov 1861, was captured at Fort Donelson, TN, taken prisoner and sent to Camp Morton, Indiana in June 1862. He was exchanged and sent to Vicksburg, Miss. in Aug 1862. He became sick and died 1 Jan 1863 in a hospital at Grenada, Miss. Uriah was born in 1843 in Lincoln County, TN, the son of Francis Marion JEAN.

Thomas A. JEAN was a Pvt. in Co B 41st TN Infantry according to the official muster roll. He enlisted 1 Dec 1862 at Shelbyville, TN and was listed as sick at Jackson, Miss. 12 May 1863, but was present for muster 1 Jan 1864. According to his write-up in Goodspeed's "History of Lincoln County" "he served in the late war in Forrest's Escort, and was in many severe skirmishes. His principal duty was scouting, and during his entire service he was neither wounded nor captured. Thomas returned home in 1865 after an absence of three years." Thomas Asbury JEAN was born 26 Aug 1836 in Lincoln County, the son of John JEAN and Ann Shaw. He died 8 Oct 1916, and is buried in the Rose Hill Cemetery in Fayetteville.

Two brothers-in-law of both David JEAN, Sr. and Wyatt JEAN also served as Confederates in the Civil War: John David BRYANT and William James (Jim) BRYANT. They were the brothers of Elizabeth Bryant JEAN, Mrs. David Sr., and Susan Bryant JEAN, Mrs. Wyatt JEAN.

John D. BRYANT and William J. BRYANT both enlisted 7 Dec 1861, in Co A 44th TN Infantry. They were both captured at Chickamauga, Ga. 19 Sep 1863, and sent to Camp Douglas, Illinois. They were transferred to Point Lookout, Maryland 23 Mar 1865, where they both took the oath of allegiance in June of 1865, after the surrender. John D. BRYANT and William J. BRYANT's widow both received Confederate pensions from TN. William J. died 31 Jan 1907, and John D. died 30 April 1926. They are both buried in the Flintville Cemetery in Lincoln County. They were the sons of William Robert BRYANT and Eliza HICKS.

John David BRYANT was still alive in 1922 and filled out the Confederate questionnaire with this information: "Shiloh was the first battle we were in on 6 April 1862. We gave the Yanks a good whipping the first day, but they gave it to us the next day, and we retreated from Shiloh back to Mississippi. Later we marched to Shelbyville, TN and from there we camped at Stones River near Murfreesboro until the battle took place the last day of 1862. There I had my right hand man by the name of Jack Fanning shot down and killed. Then we retreated back to Tullahoma, TN and stayed there the rest of the winter. I was at Decatur, TN when the Union soldiers burned the town. I went on the train to Camp Loudon, from there to Dalton, Georgia. Then we brought on the battle of Chickamauga, which I was captured in the first day's battle. I had my left hand man shot down there, and was captured in the little field near a spring. I got lost from the rest, and the Yank had me cut off from the rest. They took us to Chattanooga, and we boarded a train to Nashville. I was carried from there to Camp Douglas near Chicago. I was there in prison nearly two years."

SOURCES:

Tennesseans in the Civil War Parts 1 and 2. Civil War Cen. Com. 1964, 65

Military Annals of TN, Confederates by John B. Lind say, reprint 1974.

All Confederate military records in Tennessee State Archives in Nashville. Also pension records of David Jean, Jr., Mrs. Joseph Jean, John D. Bryant, and Mrs. Mary J. Bryant, in TSLA, Nashville. Also pension applications of Wiley Jean and Mrs. Rosannah Jean in TSLA. John D. Bryant's complete handwritten answers to the questionnaire are in TSLA. Also available in printed book form. Genealogical family information from Lincoln County, TN records: census, marriage, death certificates, Bible and cemetery records.

*Wyatt JEAN was my husband's, James T. Malone, great-grandfather.

Red Cross Announces Holocaust Victims Tracing Services

Tennesseans wishing to learn the fate of relatives who were interned in concentration and forced labor camps under the Third Reich can now have this information made available to them through the American Red Cross Holocaust and War Victims Tracing and information Center in Baltimore, Md.

The Baltimore center recently was opened following the receipt by the International Committee of the Red Cross (ICRC) of newly released documentation of 400,000 names of people who died or were interned in Third Reich concentration camps.

The expansion of the Red Cross Tracing Services will provide tracing and information services for people who wish to know the fate of relatives or who need certification of incarceration, forced labor or death of family members.

In a gesture of cooperation unprecedented in the 45 years since World War II, the Soviet Union

opened its archives and shared with the Red Cross material recovered by the Soviet Army during the liberation of the camps at the close of World War II.

Included in the transfer are 46 Sterbebücher (Death Books) containing nearly 70,000 death certificates from the Auschwitz concentration camp. In addition, the Soviets have provided access to the names of 230,000 prisoners used for forced labor in various German firms and 200,000 names of victims in other camps, including Saschsenhausen, Gross Rosen and Buchenwald.

Persons in Tennessee wishing to learn the fate of family members should contact the Nashville Red Cross, where the appropriate inquiry forms may be completed. The request will then be sent to the American Red Cross Holocaust and War Victims Tracing and Information Center in Baltimore where it will be translated into German and forwarded to the International Tracing Service in Arolsen, West Germany which is a branch of the Central Agency of the International Committee of the Red Cross.

"We hope that the expansion of our tracing capability for victims of the Holocaust will bring closure to the pain felt by so many people who don't know what happened to members of their family, and we are happy to participate in this serve," said Christopher (Kit) Parker, chapter executive officer of the Nashville Red Cross.

"We want people in Tennessee to be aware of the availability of this important new information, so that they can utilize it in searching for the fate of family and friends," said Parker. "The search can take from one to two years because the process is a complex one. The need to be absolutely thorough will slow down the return on information, but interim reports will be provided to the person who filed the request."

For more information, contact the Nashville Red Cross (615)327-8407.

Used by permission of the American Red Cross

GENEALOGY AND GENIE®

by Martha Colburn

Have you ever wanted to talk to other Genealogists? Have you wanted to discuss common ancestors with distant cousins? How about asking an expert to help you through a particularly puzzling piece of research? Is it too long to wait until the next MTGS meeting for such an opportunity? Then check out the growing world of electronic communications.

With just your computer, a modem and telephone line, and a communications program, you can connect to a large computer system called GENie®. GENie has many areas, called Round Tables, where people gather to discuss common interests. There is one Round Table that specializes in just Genealogy.

This group of people includes professional genealogists, computer experts, support from the program manufacturers, experts in history and geography, and just plain folks. You can arrive at the Bulletin Board whenever it is convenient to you, and post your questions. You also can read all answers to everyone's previous questions. It is open to anyone with a computer and a GENie account.

Ah-hah! Now it comes. Money rears its ugly head. Like most good things, it is not free, but has just recently gotten very inexpensive. To obtain a GENie account, call Client Services at 800-638-9636. They will take your credit card number and open your account. It will take a day or two to get your user-id and password. They will charge you \$4.95 a month, starting immediately.

Once you have received your GENie user id, you can communicate with many of GENie's bulletin boards, during non-prime time, for that \$4.95 you are paying. These are called Star*Services. This includes the Genealogy bulletin board area. All you can stand for only \$4.95 a month. There is a Nashville phone number for which there is no extra charge. The number in Clarksville costs an extra \$2.00 an hour. Non-prime time is almost like the phone company: from 6PM to 8AM local time during the week, plus all day on weekends and holidays.

You can communicate with GENie at any speed you want to set your modem for, without extra charges. Many bulletin boards charge extra for 2400 baud. GENie does not.

Once on the Genealogical Round Table, you can select different areas, or categories to read. There are categories for New England, New York, The South (with Tennessee as a topic within that category), South America, Asia, and other areas. There are also categories for discussing computer applications in Genealogy, and help for different programs you might be using.

One category is set aside for posting queries for a family of particular interest to you. You also can browse

through this listing to see if anyone is currently working on your favorite family. I have found one or two distant cousins.

You are more likely to get help if you look geographically. That is, if your family is from Chenango County, NY, to post your questions under the New York category. Others who are expert in that area will be reading your notes, and make suggestions of what to do next. Someone may even be living in Chenango Co., and offer to stop by the county seat and look up Uncle Charlie's will for you.

The GENie manual is even on line, if you are a manual reader. If not, the whole system is menu-driven and you can access it that way. After you learn how it works, you can skip the menus and just issue commands.

GENie has also put out a communications program, called Aladdin, that will allow you to navigate around GENie and plan your on-line trips while you are off line. You can write your replies or questions, and then Aladdin will call up GENie, and upload all that information. It will even gather all the data you tell it to, and save it for later reading.

To obtain Aladdin for your computer (IBM PC or Atari-ST), you will need to check into the Aladdin Bulletin Board, and download the program. This costs about \$3.00 because this is not a Star*Service. The rate for non-Star*Services is \$6.00 an hour and this download takes about half an hour.

Electronic mail is another service offered by GENie. If you don't want to post your questions on the Bulletin Board for general reading, you can send mail to a specific individual. Mail is also a Star*Service and is included in the \$4.95.

GENie has many other services that I have not mentioned. All of the usual shopping, information, game and travel reservation systems are available.

GENie, Aladdin, Star*Service are trademarks of General Electric Information Services.

Note: we have recently hooked into Prodigy, a similar but more expensive service. It has a vast genealogy bulletin board — it's impossible not to be impressed with what you can do with a computer and a modem. If you have the equipment and the time it really is a lot of fun and very informative. bjs

GEORGE THOMPSON FAMILY HISTORY

Transcribed and submitted by Betty Dorris Davis

This history was found loose in Davidson County, Tennessee Chancery Court papers, Metropolitan Government Archives. Ms. Davis has been searching for the location of Shawanee Springs.

George Thompson who lives at Shawanee Springs -- moved to that place 20th May 1792 -- The said George Thompson was born on the North fork of James River (called the Rivanna River) in the state of Virginia on the 12th of February 1748 old style, Now the 23^d Feby 1749. The said Geo Thompson's grand father on the fathers side was Col. Roger Thompson (of Blackwell Neck), Hanover County Virginia, his wife was the name of Foster -- The said Geo Thompson's grand father on the mothers side was Col Thomas Claiborne who lived at Sweet hall in County of King William State of Virginia his wife was the name of Fox. The eldest Son of Col R Thompson named Joseph Thompson married the Eldest daughter of Col Tho^a Claiborne named Sarah Claiborne. The said Joseph Thompson was born in the year 1703 & died in the year 1764: The said Sarah Claiborne was born in the year 1713 & died in the year 1777. The said Joseph was the Father & the said Sarah was the Mother of the said Geo. Thompson. They had ten children. Names as followeth. Joseph. Mary. Francis (Ann Fox) (Ann Claiborne) Elizabeth. Roger. George. Leonard & John. Col Roger Thompson by one wife Miss Foster had 20 children. Col Thomas Claiborne by one wife Miss Fox 20 children Each of them Raised 17 children to be men & women. The Present Geo Thompson on the 6th of Dec^r 1773 Married Rebecca Burton daughter of Capt^a W^m Burton who married a daughter of Col Jno Cobb who married a daughter of John Addison who was bro^r to Joseph Addison the poet. I know very little of Capt. W^m Burton's family he was an hon^{ble} gentleman of good character lived on Ja^a River at a place in Albermarle County called Buffaloe. Geo Thompson & Rebecca his wife had a son born on Wednesday about sun set 29 Nov 1775. His name was Samuel he died on the Friday following. They had another son Geo Claiborne born on Thursday ab^t one hour by sun in the evening 30th April 1778. Rebecca Thompson departed this life 21st May 1778 - I Geo Thompson am now writing 8th Oct 1823 - 9th Oct 1823 Shawanee Springs. This paper is intended for my two grandsons Geo Madison Thompson & William. Each of them is to copy this acct & keep it as coming from their grand father who loves them very much as as also the rest of his grand children & hopes they may be happy in this world live & die Christians & be happy in eternity. I pray that all my grand children may have good tempers be kind to every body but particularly to those they may have power over be kind to their poor negroes -- This is the wish & pray^r of

G Thompson

Col Roger Thompson
&

Col Thomas Claiborne were each of them very rich. they were my grand fathers. My Father Joseph Thompson was six feet 2 inches high Weight about 200 had more Strength & activity than almost any man on Earth. My Mother middle size uncommonly handsome.

G T

Dorothy Potter writes to us 17 February 1991, "In regard to a question concerning the loss of early Assembly records that was asked after the talk by Gale [Barnman] Saturday, I looked up some previous research that I had done pertaining to this puzzle. I thought it might be of interest to you and your readers."

**SOME NOTES ON THE DESTRUCTION OF EARLY TENNESSEE
LEGISLATIVE PAPERS**
by Dorothy Williams Potter

Researchers have asked why many of the early Tennessee Assembly records are missing. Some of the following reasons may be of interest to readers, and their knowledge of the situation may save their time in searching for these records.

Early records in Tennessee met with accidental and intentional destruction, c.f.,

1812. Senate Journal

The Committee appointed to examine and destroy the useless papers in the Secretaries' ... office beg herewith to report that they have in part discharged that duty.¹

It was also noted that

... Unquestionably some of the legislative papers were lost in transit when the "seat of government" was moved from Knoxville to Kingston; from Kingston to Knoxville; from Knoxville to Nashville; from Nashville to Knoxville; from Knoxville to Murfreesboro; and finally from Murfreesboro to Nashville. Lack of filing facilities plus crowded quarters were unquestionably factors that contributed to the destruction of state papers... ²

Dr. White further stated

... it is conceivable that some of the future custodians of official documents regarded them also as 'useless papers' and accordingly consigned them to the pot-bellied stove or dump heap. Due to lack of historical perspective and to indifference, an 'innumerable company' of state historical documents of Tennessee have disappeared forever.³

In 1908, Dr. St. George Leakin Sioussat, writing in the American Historical Association Proceedings, gave information concerning the condition of the archives of the State at that time. As regarding the state of the original records, he gives this graphic account of shameful neglect.

The overcrowding of the office of the secretary of state led to the storing of the overflow in the west crypt of the capitol.

Here they lay piled in masses on the stone floors, among old paint barrels, ashes, and trash of every description, dirt, and grime. They were wet and rotting, and it was during this period that the janitor of the capitol burned up several cartloads because of the fact that they were 'wet and nasty and smelled bad.'⁴

¹ State of Tennessee, Senate Journal, 9th General Assembly, 2nd Session, 1812, p. 130.

² Robert H. White, ed., Messages of the Governors of Tennessee, vol. I: 1796-1821 (Nashville, Tennessee: Tennessee Historical Commission, 1952), 352n.

³ *Ibid*

⁴ St. George Leakin Sioussat, "A Preliminary Report Upon the Archives of Tennessee," American Historical Association Proceedings (Washington, D.C.: Government Printing Office, 1908, p. 206.

SOCIETY OF THE CINCINNATI

by Silas Emmett Lucas, Jr.

The Society of the Cincinnati is the nation's oldest hereditary and patriotic organization, made up exclusively of descendants of the Officer Corps of George Washington's army. Founded on May 13, 1783 by American Officers of the Continental Army, the Cincinnati elected George Washington as its first president general and Alexander Hamilton as its second. Louis XVI was the Patron of the order in France. Currently, the Society of the Cincinnati consists of societies in the thirteen original states and France. Cincinnati, the city in Ohio, is named in honor of the society. The society is named in honor of Lucius Quintus Cincinnatus, the Roman who was called from his plow to defend his nation. He led the army against an invasion and promptly returned to his farm once he had defeated the enemy. George Washington and his companions thought they had acted in much the same way. The principles adopted by the Society of the Cincinnati and forming its basis are stated:

An incessant attention to preserve inviolate those exalted rights and liberties of human nature, for which they have fought and bled, and without which the high rank of a rational being is a curse instead of a blessing.

An unalterable determination to promote and cherish between the respective States that national honor so essentially necessary for their happiness and the future dignity of the American Empire.

To render permanent the cordial affection subsisting among the officers. This spirit will dictate brotherly kindness in all things and particularly extend to the most substantial acts of beneficence, according to the ability of the Society, towards those officers and their families who unfortunately may be under the necessity of receiving it.

These principles have continued to be the guiding purpose of the Society.

Membership in the Society is difficult. Most states allow only one member to represent each officer. Nephews (collateral descendants) are allowed to represent a qualifying ancestor should there be no direct descendants available.

Opposition to the Society of the Cincinnati developed early. Some perceived it as a threat to American ideals or as the seedbed of an American aristocracy.

Benjamin Franklin, Samuel Adams, Thomas Jefferson and John Adams were among the vocal opposition. In a relatively short time, however, we find both Franklin and John Adams elected to honorary membership in their respective states.

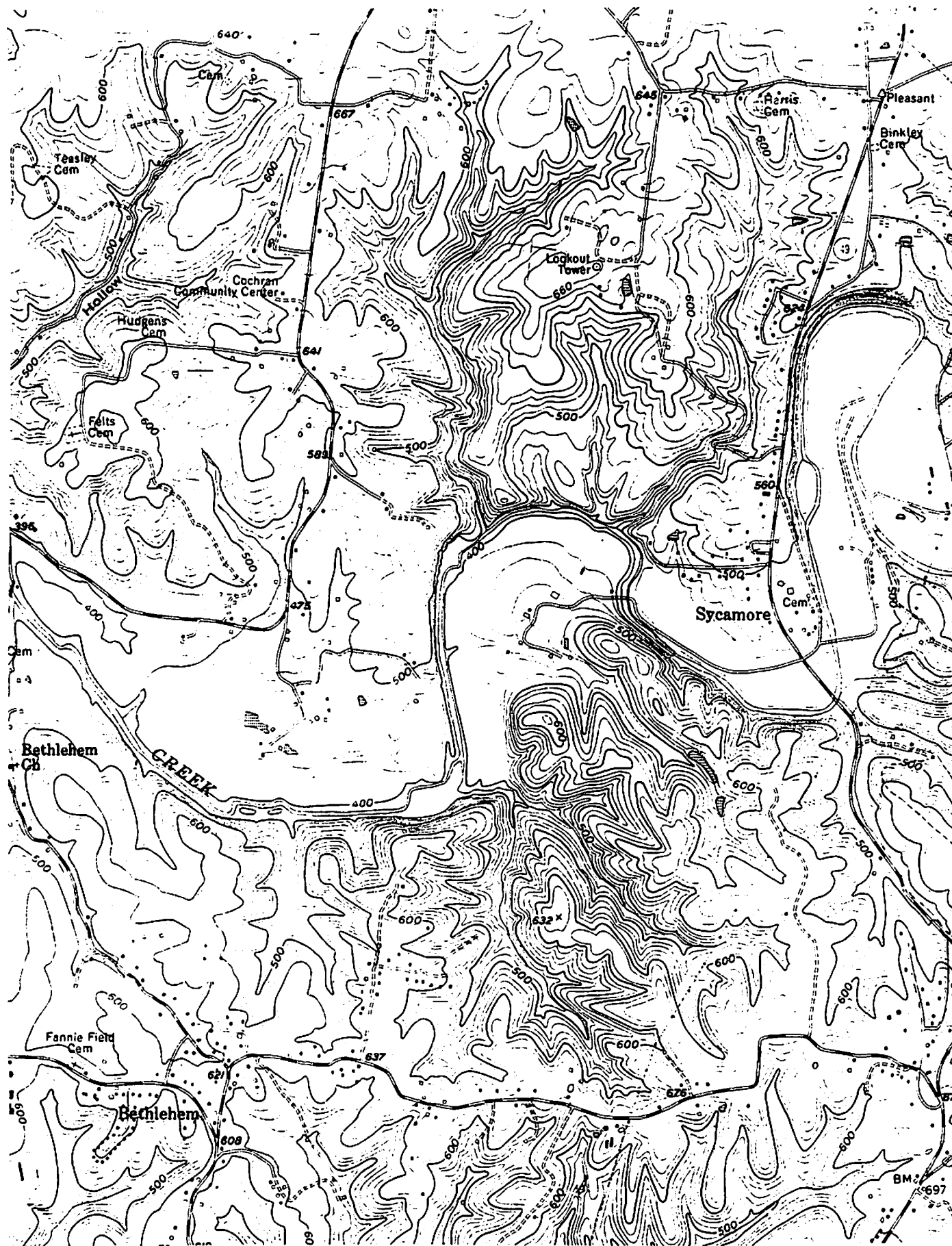
The most famous symbol of the Cincinnati is the Eagle of the Order elaborately set in diamonds and presented to General Washington in May 1784 at the first general meeting by Count d'Estaing, president of the Society in France. This jewel is considered as "appurtenant to the office of the President General," and each succeeding incumbent has so worn it.

The French-American link remains close. A favorite project of the Society is the French scholar program, whereby a recently graduated son of a member of the French Society is invited for a two-month United States tour, staying at the homes of American members all over the country.

The headquarters of the Society is Anderson House on Massachusetts Avenue in Washington, D.C., originally a private residence built about 1905 by Larz Anderson. In 1939, after member Anderson's death, his widow donated their home to the Society. Anderson House maintains "a National Museum for the custody and preservation of documents, relics, archives, especially those pertaining to the American Revolution, accessible to the public at reasonable hours." Among the unique items on view is the earliest known example of the Purple Heart. The United States Government also uses Anderson House for diplomatic receptions for visiting heads of state.

Over the years the Cincinnati has had many prominent individuals as hereditary and honorary members including sixteen U.S. presidents. Perhaps the Society's most distinguished hereditary member of the twentieth century was Winston Churchill. His maternal great-great-grandfather, Lieutenant Reuben Murray, had served in the Revolution. During his induction into the Society in 1952 he ironically observed: "I am in the interesting situation of having fought on both sides in the war between us and we."

Each state maintains a suite in Anderson House for use by members when visiting Washington. We were given a tour of the facilities last spring by Rev. Lucas, a member of the North Carolina Society, and can recommend it as a tourist stop -- most impressive. bjs



Geological Survey Map (commonly called "Topo" or topographical map). Section for Cheatham County.

1856 CHEATHAM COUNTY TAX LIST

by Gregory G. Poole

This is the continuation of the combined 1856 tax list for Cheatham County. The first three districts are found in the winter 1991 issue. This will take you through District 8. Look for the completion of the list in the summer journal.

An asterisk before the name represents tht the person paid a poll tax for the year, while an asterisk under the columns 'slaves' and 'value of slaves' means that the resident was a landowner, but owned no slaves.

DISTRICT 4

NAME	ACRES OF LAND	DESCRIPTION OF LAND	\$ VALUE OF LAND	SLAVES	VALUE
Alley, Joseph	125	On the waters of Half Pone Cr. by M. Ramy	625	*	*
Banfield, A.	50	On Brush Cr. by J. F. Pennington and S. Rawson	400	*	*
*Basford, B. F.	50	On Half Pone Cr. by U.S. Stack and J. Basford	3500	*	*
*Basford, G. W.	—	—	—	-	-
*Basford, J. B.	100	On Half Pone Cr. by D. Felts & U.S. Stack	600	*	*
*Basford, J. J.	—	—	—	-	-
*Basford, John	78	On Half Pone Cr. by B. F. Basford and Z. J. Basford	400	*	*
Basford, Sarah	83	On Parson's Cr. by R. Bobo & B. Elliott	300	*	*
Basford, Thomas A.	130	On Half Pone Cr. by T. H. Harris & M. Ramy	800	*	*
*Basford, W. P.	—	—	—	-	-
*Basford, Z. J.	227	On Half Pone Cr. by David Felts & A. D. Cage	900	*	*
Bobo, Elizabeth	200	On Parson's Cr. by J. R. Drake & W. Gardner	1200	3	1900
Bobo, Rachel	124	On Parson's Cr. by E. Bobo & R. Pennington	750	1	750
Bracy, S. H.	100	On Half Pone Cr. by Z. J. Owens and R. Pennington	900	*	*
*Bright, A. J.	66	On Half Pone Cr. by D. Felts & U.S. Stack	600	*	*
Bryan, A. K. (heirs) by Mary Bryan	253	On head of Half Pone Cr. by W. J. Gossett and R. Pennington	16,000	*	*
Cage, Dr. A. D.	800	On Parson's Cr. by B. Elliott & Sam McGehee	4000	5	3400
*Connell, W. W.	—	—	—	-	-
*Drake, F. M.	—	—	—	-	-
*Drake, G. W.	45	On the waters of Parson's Cr. by Dr. Cage	350	*	*
Drake, James R.	—	—	—	-	-
*Dye, B. R.	—	—	—	-	-
Elliott, Benjamin	1015	On Brush Cr. by A. D. Cage & J. R. Darden	5000	4	3500
*Ellis, R. W.	—	—	—	-	-
Felts, D. H.	287	On the waters of Half Pone Cr. by A. J. Bright	2000	*	*
*Felts, H. R.	—	—	—	-	-
*Fort, Robert	—	—	—	-	-
Fox, Lorenzo D.	247	On Raccoons' Cr. by E. P. Morris & R. H. Knox	1250	2	1500
*Frey, W. W.	160	On Half Pone Cr. by Z. T. Basford & U. Stack	870	*	*
*Gardner, W. B.	257	On the waters of Parson's Cr. by A. D. Cage	1900	4	3400
*Gossett, W. J.	52	On Buffalo Cr. by Thos. Basford & M. Bryant	365	*	*
Grant, David	75	On Parson's Cr. by Elizabeth Bobo	450	*	*
*Grant, S. N.	—	—	—	-	-
Grey, Logan	141	On the head waters of Parson's Cr. by A. D. Cage	550	*	*
*Hammet, James J.	—	—	—	-	-
Harris, H. H.	142	On the head of Half Pone Cr. by G. W. Shaw and J. J. Wilson	1400	*	*
Huggens, J. F.	26	On the waters of Raccoon Cr. by L. Fox and E. P. Morris	130	*	*
*Hunter, D. W.	—	—	—	-	-
*Hunter, Thomas	—	—	—	-	-

1856 CHEATHAM COUNTY TAX LIST

District 4

NAME	ACRES OF LAND	DESCRIPTION OF LAND	\$ VALUE OF LAND	SLAVES	VALUE
Inman, L. G.	--	--	-	-	--
*Jackson, W. G.	225	On Half Pone Cr. by J. J. Wilson and Sarah Shaw	1150	*	*
*King, Robert	52	On Half Pone Cr. by John Huggins and John Stack	260	*	*
*Linch, John	--	--	-	-	--
*McDaniel, S. J.	--	--	-	-	--
*McDaniel, W. A.	--	--	-	-	--
McGeehee, Samson	230	On Parson's Cr. by J. R. Drake and J. M. Stack	1400	*	*
*Moody, R. H.	--	--	-	-	--
Morris, Nathan	443	On Raccoon Cr. by E. P. Morris and and J. C. Pace; 1 mill	3500	3	2400
*Morris, R. C.	--	--	-	-	--
*Morris, W. T.	--	--	-	-	--
*Morris, William H.	--	--	-	-	--
*Murphey, E. G.	323	On Half Pone Cr. by U. Murpf & J. R. Drake	2000	2	5000
*Nicholson, A. H.	100	On Half Pone Cr. by J. Mallory & E. L. Williams	600	*	*
Owens, Z. J.	700	On Half Pone Cr. by M. D. L. Williams and Sam Bracy	600	*	*
*Pace, J. C.	170	On Raccoon Cr. by E. G. Murphey & N. Morris	850	1	700
*Pace, William H.	141	On the waters of Buffalo Cr. by B. Elliott	600	*	*
Pennington, F. P.	203	On Brush Cr. by J. W. Pennington & A. Adkins	1050	5	3800
*Pennington, J. W.	140	On Brush Cr. by F. Pennington & H. Reeks	750	2	20000
Pennington, Robert	870	On the waters of Half Pone Cr. by J. E. Turner	4400	5	3700
Pickering, William	100	On Parson's Cr. by B. Elliott & E. Bobo	900	*	*
Ramy, Milton	255	On the waters of Half Pone Cr. by H. H. Harris	2250	2	1800
*Reeks, Hartwell	255	On Brush Cr. by B. Elliott & R. Pennington	1500	*	*
*Rosson, James	238	On Half Pone Cr. by J. E. Turner & J. J. Wilson	1675	*	*
*Shaw, G. W.	80	On Half Pone Cr. by H. H. Harris & U. Murpf	600	*	*
*Shaw, J. W.	60	On Half Pone Cr. by Jas. Mallory & Wilson, heirs	450	*	*
Shaw, Sarah	328	On Half Pone Cr. by E. G. Murphey	2250	2	1600
*Stack, D. W.	--	--	-	-	--
*Stack, G. W.	--	--	-	-	--
*Stack, J. F.	574	On the waters of Half Pone Cr. by M. E. Mallory	1870	*	*
*Stack, J. M.	56	On the waters of Half Pone Cr. by J. R. Drake	280	*	*
Stack, John	26	On the waters of Half Pone Cr. & J. E. Turner	130	*	*
*Stack, Uriah S.	125	On Half Pone Cr. by D. H. Felts & L. Williams	1200	*	*
Stack, W. H.	56	On Half Pone Cr. by W. Fry & J. Basford	280	*	*
Stewart, Sarah	115	On Half Pone Cr. by Sarah & G. W. Shaw	800	*	*
Tucker, Edward	180	On Parson's Cr. by J. R. Drake & Dr. Cage	1000	*	*
Turner, J. E.	226	On Half Pone Cr. by J. J. Wilson & R. Pennington	1350	*	*
*Walker, John	--	--	-	-	--
*Walker, William	--	--	-	-	--
Wilson, Isaac B.	--	--	-	2	1900
*Watson, T.	110	On Half Pone Cr. by J. Stack & Dr. Cage	550	*	*
*Weakley, F.	40	On Parson's Cr. by J. R. Drake & Dr. Cage	200	*	*
Weakley, J. C. F.	94	On the head waters of Parson's Cr. by Dr. Cage	570	*	*
Williams, E. L.	1000	On Half Pone Cr. by H. H. Harris & J. E. Turner	5500	12	11,900
Wilson, J. J.	300	On Half Pone Cr. by H. H. Harris	2400	6	4000
*Woodson, A. T.	--	--	-	-	--
12,857 acres			\$76,205	67 slaves	\$55,350

1856 CHEATHAM COUNTY TAX LIST DISTRICT 5

NAME	ACRES OF LAND	DESCRIPTION OF LAND	\$ VALUE OF LAND	SLAVES	VALUE
*Barnes, B. J. Esqr.	-	-	-	-	-
*Batts, Thomas	-	-	-	-	-
Bell, Phillip	-	-	-	-	-
Bell, Thomas Sr.	545	On Dry Fork by L. J. Pardue & W. H. Stewart	1580	2	2000
*Bell, Thomas Jr.	-	-	-	-	-
*Clifton, E. T.	-	-	-	-	-
Clifton, Julia	75	On Raccoon Cr. by N. & E. P. Morris	500	*	*
*Eatherly, Isaac	320	Near Cheap Hill & L. J. Perdue & Cumberland River	2600	4	2600
*Edwards, Abner	234	On the waters of Sycamore Cr. by Wash. Wall	1500	1	800
*Edwards, J. L.	100	On Sycamore Cr. by R. Maxey & D. Sanders	600	*	*
Edwards, Martha	-	-	-	1	800
*Edwards, Oliver	-	-	-	1	800
*Edwards, Wash.	-	-	-	1	500
Flintoff, Mrs. E. W.	500	On Sycamore Cr. by the Cumberland R. and C. Sims	3500	2	1400
*Gent, J. M.	184	On Spring Cr. by J. Sanders & Eagle Mill Tract	920	*	*
*Gunter, W. G.	-	-	-	-	-
*Hall, J. G.	-	-	-	-	-
Harris, Mrs. S.	50	On Dry Fork by J. Nicholson & J. D. Nicholson	100	*	*
*Hooper, W. B.	-	-	-	-	-
*Hudgens, B. L.	-	-	-	-	-
Hudgens, E. G.	928	On Spring Cr. by N. Morris & A. J. Teasley	4000	6	5150
Hudgens, Elizabeth	140	On Spring Cr. by E. G. Hudgens and W. C. Sanders	560	2	1600
Hudgens, James Sr.	95	On Spring Cr.	350	6	3300
*Hudgens, James Jr.	-	-	-	-	-
*Hudgens, W. W.	-	-	-	-	-
Jones, Mrs. Agnes	-	-	-	2	1600
*Justice, J. E.	-	-	-	-	-
*Krantz, Joseph	85	On Sycamore Cr. by R. Maxey & Sarah Sanders	425	*	*
*McCauley, David	9	On the Road bound by L. J. Pardue	200	*	*
*Maxey, G. W.	100	On the waters of Spring Cr. by E. G. Hudgens	800	*	*
*Maxey, Henry	159	On the waters of Sycamore Cr. by W. Wall	1000	*	*
Maxey, J. W. by R. Maxey, Guard.	-	\$464 capitol and interest	-	-	-
Maxey, M. by W. D. Wall, guard.	-	\$455 capitol and interest	-	-	-
*Maxey, Rawls	160	On Sycamore Cr. by J. L. Krantz & B. F. Stewart	800	1	500
Nancy, C. W.	14	On Sycamore Cr. by J. M. Gent & A. J. Teasley	60	*	*
Nicholson, A. H.	-	-	-	-	-
Nicholson, E. H.	250	On Raccoon Cr. bound by H. Morris amd D. Hunter	1250	5	3800
Nicholson, G.	230	On Dry Fork by E. H. Nicholson and J. D. Nicholson	1000	7	5000
*Nicholson, J. D.	170	On Dry Fork by G. Nicholson & Wyatt Shearron	700	2	1600
Nicholson, Mrs. L.	255	On Dry Fork by G. Nicholson & John Walker	1500	*	*
*Owens, James W.	99	On Sugar Fork by E. R. Hudgens and James Hudgens	400	*	*
*Pace, James H.	30	On Dry Fork by G. Nicholson & N. Morris	150	*	*
*Pace, Thomas	100	On Dry Fork by G. Nicholson & E. G. Hudgens	400	*	*
*Pentecost, Absalom	-	-	-	-	-
Perdue, Littleton J.	1376	On Cheap Hill by Wash. Wall & I. Eatherly; 2 mills	14,500	16	14,000
*Pool, B. F.	-	-	-	-	-
*Pool, Henry A.	-	-	-	-	-
*Pool, Henry R.	-	-	-	-	-
Pool, James	66	On Dry Fork by Mary Teasley & Ab. Gupton	250	*	*
Pool, John	65	On Dry Fork by Ab. Gupton & Mary Teasley	260	1	700
*Pool, Napoleon B.	-	-	-	-	-
*Rasberry, Church	-	-	-	-	-
*Read, B. F.	-	-	-	-	-

1856 CHEATHAM COUNTY TAX LIST DISTRICT 5

NAME	ACRES OF LAND	DESCRIPTION OF LAND	\$ VALUE OF LAND	SLAVES	VALUE
*Read, David	—	—	—	—	—
Read, Elizabeth	101	On Spring Cr. by Z. Shearron & A. J. Teasley	600	•	•
*Read, James	—	—	—	—	—
Read, L. L. (heirs)	100	On Cumberland R. by I. Eatherly	600	•	•
*Read, W. W.	—	—	—	—	—
Sanders, Daniel	205	On Sycamore Cr. by A. J. Teasley and D. L. Stewart	1050	•	•
*Sanders, David	—	—	—	—	—
*Sanders, John	—	—	—	—	—
*Sanders, Jonathan	—	—	—	—	—
Sanders, Mrs. S. P.	180	On the waters of Sycamore Cr. by J. M. Gent	1000	•	•
*Sanders, W. W.	—	—	—	—	—
*Sanders, William Caleb	20	On the waters of Spring Cr. by D. Sanders	1000	•	•
*Sanders, William H.	—	—	—	—	—
*Shaw, H. J.	—	—	—	—	—
*Shaw, W. A.	—	—	—	—	—
*Shearron, B. H.	—	—	—	1	750
*Shearron, J. W.	—	—	—	—	—
*Shearron, James A.	—	—	—	—	—
Shearron, Jesse	372	On Sugar Fork by Wyatt Shearron	1100	1	800
Shearron, Jesse	63	On Spring Cr. by Thos. Walker & Thos. Miles	300	1	700
*Shearron, Sterling	—	—	—	—	—
Shearron, W.	—	—	—	1	(not det.)
*Shearron, W. D.	—	—	—	—	—
Shearron, Wyatt	159	On Sugar Fork by J. D. Nicholson & C. Walker	650	1	1000
*Smith, Benjamin	200	On Spring Cr. by W. C. Sanders	(not det)	—	1
500					
*Smith, Elijah	—	—	—	—	—
*Smith, Elisha	—	—	—	—	—
*Smith, W. C.	—	—	—	—	—
Smith, William	151	On Sycamore Cr. by J. Simpkins & J. Forbes	800	•	•
*Stewart, A. W.	—	—	—	—	—
Stewart, A. W. & bro.	—	1 mill	500	•	•
*Stewart, Benjamin F.	170	On Sycamore Cr. by Abner Edwards	1000	1	1000
*Stewart, D. L.	65	On the head of Ramses Br. by D. Sanders	325	•	•
*Stewart, E. L.	308	On the Cumberland R. by Mrs. Flintoff	2600	•	•
Stewart, M. B.	200	On the Cumberland R. by Margaret and E. L. Stewart	1200	1	1000
Stewart, Margaret	380	On the Cumberland R. by L. J. Pardue	3500	3	2400
*Stewart, W. J.	—	—	—	—	—
*Stewart, William	300	On Sycamore Cr. by W. D. Wall & J. M. Gent	1550	•	•
*Stewart, William H.	300	On Dry Fork by L. J. Pardue & Z. Shearron	1200	8	5425
*Teasley, A. J.	255	On Sugar Fork by D. Sanders & Cintha Walker	1600	2	1300
*Teasley, Dempsey	—	—	—	1	750
Teasley, F. M.	—	—	—	1	800
*Teasley, John W.	75	On Raccoon Cr. by N. Norris & J. Pace	400	2	1150
Teasley, Mrs. Mary	383	On Dry Fork by Thos. Bell & Ab. Gupton	1250	5	3700
*Walker, B. F.	100	On Sugar Fork by A. J. Teasley & J. Shearron	550	•	•
Walker, Mrs. Cintha	167	On Spring Cr. by A. J. Teasley	750	2	1800
*Walker, Joshua	120	On Dry Fork by Thos. Pace & J. D. Nicholson	500	•	•
*Walker, Thomas	100	On the waters of Spring Cr. by E. G. & Jas. Hudgens	400	•	•
*Walker, W. W.	196	On the Dry Fork by J. Nicholson & Z. Shearron	850	2	2000
*Wall, Wash.	156	On Sycamore Cr. by Ab. Edwards	850	2	1250
Williams, W. W.	—	—	—	1	800
11,956 acres			\$69,705	106 slaves	\$81,875

1856 CHEATHAM COUNTY TAX LIST DISTRICT 6

NAME	ACRES OF LAND	DESCRIPTION OF LAND	\$ VALUE OF LAND	SLAVES	VALUE
*Balthrop, Thomas G.	130	On the waters of Half Pone Cr. by W. C. Hunter	800	•	•
*Batts, Benjamin	--	--	--	--	--
Bigger, Thompson	--	--	--	1	750
*Brazier, Isaac	--	--	--	--	--
*Brister, William	--	--	--	--	--
Council, David	113	On Half Pone Cr. by Rob. Major and A. Gupton	680	1	750
Cross, J. B. & son (2 polls)	208	On Half Pone Cr. by B. Persons and A. Gupton; 1 mill	2600	•	•
*Durham, William	--	--	--	--	--
Everett, Bennett (overseer)	100	On Half Pone Cr. by Abner & E. N. Gupton	600	•	•
*Frazier, Isaac	187	On Half Pone Cr. by H. Frazier	1500	2	1800
*Frazier, James	235	On Half Pone Cr. by L. Frazier & T. J. Weakley	2300	•	•
*Frazier, Leonard	122	On Half Pone Cr. by I. & J. Frazier	1200	•	•
*Garrison, George W.	--	--	--	1	1000
Gupton, Abner	4443	On Half Pone Cr. & Cumberland R; 1 mill	31,600	32	22,5000
*Gupton, Eben N.	233	On the waters of Half Pone Cr. by Mrs. B. Lankford	600	•	•
*Gupton, Robert T.	--	--	--	--	--
Gupton, R. T., agent for M. H. Gupton	--	--	--	--	--
*Hollis, Isaac	--	--	--	--	--
*Humphrey, C. M.	--	--	--	--	--
*Hunter, Abner	--	--	--	2	1500
*Hunter, Allen	125	On Raccoon Cr. by T. Walker & A. Gupton	900	2	1400
Hunter, Dempsey	269	On Raccoon Cr. by E. G. Murphey	1500	6	5100
*Hunter, Henry	160	On Half Pone Cr. by W. C. Hunter & J. Walker	800	1	650
*Hunter, James	--	--	--	--	--
*Hunter, John O. (overseer)	--	--	--	1	1000
Hunter, Mary	100	On Half Pone Cr. by Rob. Major & A. Gupton	550	1	800
*Hunter, Thomas D.	30	On Half Pone Cr. by Abner Gupton	250	2	1800
*Hunter, W. C.	218	On Half Pone Cr. by T. G. Balthrop & R. Mallory	1500	1	1000
Jennett, Sarah	25	On Half Pone Cr. by B. Persons & R. B. Walker	40	•	•
*Jones, Alexander	--	--	--	--	--
*Jones, Alsey	--	--	--	--	--
*Kirk, J. S.	--	--	--	1	800
Lankford, Mrs. Bethiah	340	On Half Pone Cr. by J. H. Major & E. H. Gupton	2400	3	2700
*Lankford, Griffin	--	--	--	--	--
*McCauley, George W.	--	--	--	--	--
Magee, J. M.	--	--	--	--	--
*Major, James H.	275	On Half Pone Cr. by J. S. Major & W. C. Pinson	2000	2	1800
Major, John S.	2060	On Half Pone Cr. & Cumberland River	15,600	7	5700
Mallory, James	418	On Half Pone Cr. by U. Murpf & R. J. Mallory	4000	16	12,750
*Mallory, Robert J.	300	On Half Pone Cr. by Jas. Mallory & T. Walker	2000	3	2600
*Mohon, John	--	--	--	--	--
*Morgan, E. C.	--	--	--	--	--
*Morgan, Willis H.	110	On the waters of Half Pone Cr. by B. Parsons	900	•	•
Mosley, Elizabeth	48	On the Cumberland R. at Mosley's Ferry	700	1	1000
Mosley, Elizabeth, guard. for Jas. & Mary	22	On the Cumberland R. at Mosley's Ferry	350	•	•
Mosley, Robert by Isaac Frazier, guard.	11	On the Cumberland R. at Mosley's River	1750	•	•
Murpf, Uriah	131	On Half Pone Cr. by E. G. Murphey & J. Mallory	850	•	•
*Nicholson, J. D.	525	On Half Pone Cr. by E. L. Williams	3200	2	1500
*Nicholson, J. G.	--	--	--	--	--
*Nicholson, Jesse Montgomery	--	--	--	--	--
*Nicholson, W.	--	--	--	--	--
*Nicholson, William	--	--	--	--	--
*Pace, Hardy C.	--	--	--	--	--
*Pace, J. N.	--	--	--	--	--
*Pace, W. H.	228	On Raccoon Cr. by Mrs. L. Nicholson	860	•	•

1856 CHEATHAM COUNTY TAX LIST DISTRICT 6

NAME	ACRES OF LAND	DESCRIPTION OF LAND	\$ VALUE OF LAND	SLAVES	VALUE
*Page, William	--	--	--	-	-
*Perdue, Andrew J.	--	--	--	-	-
*Perdue, James C.	--	--	--	-	-
*Perdue, John W.	--	--	--	-	-
Persons, Benjamin	--	--	--	-	-
*Pinson, William C.	178	On Half Pone Cr. by J. H. Major	1375	•	•
*Teasley, Plummer	--	--	--	-	-
Turner, Mrs. E. P.	330	On Half Pone Cr. by Thom. & R. B. Walker	2000	3	2400
Turner, H. W.	--	--	--	1	750
*Turner, M. G.	--	--	--	-	-
*Walker, R. B.	211	On Half Pone Cr. by B. Person	1900	1	750
Walker, Thomas	575	On Half Pone Cr. by R. J. Mallory	4000	•	•
*Weakley, J. R.	--	--	--	-	-
Weakley, T. J.	188	On Half Pone Cr. by J. S. Major	1800	1	1000
*Woodall, Jacob	--	--	--	-	-
*Woodson, J. J.	75	On Raccoon Cr. by D. Hunter	500	•	•
	12,833 acres		\$90,600	111 slaves	\$88,050

DISTRICT 7

NAME	ACRES OF LAND	DESCRIPTION OF LAND	\$ VALUE OF LAND	SLAVES	VALUE
*Allen, G.	--	--	--	-	-
Barton, D. E. & Brothers	653	On Half Pone Cr. by J. S. Major	8000	5	4000
*Bearden, Haywood	153	On Dry Fork by J. J. Chambliss	1225	1	750
*Bearden, R. A.	--	--	--	-	-
*Blank, D. C.	165	On Dry Fork by G. A. Edwards & Thos. Gupton	675	•	•
*Bobbitt, James	60	On Dry Fork of Half Pone Cr. by J. H. Williams	300	•	•
Bobbitt, Sarah	30	On Dry Fork by Jas. Bobbitt & Z. Shearron	1800	2	1000
*Chambliss, J. J.	108	On Dry Fork by H. Bearden & T. J. Weakley	760	•	•
*Chambliss, M. M.	170	On Fall & Dry Fork Cr. by W. Plaster	850	1	800
*Clifton, W. E.	--	--	--	-	-
Clifton, William	214	On the waters of Fall Cr. by Thos. Bell	1100	1	700
*Davis, George	--	--	--	-	-
*Denny, Robert W.	--	--	--	-	-
*Edwards, George A.	93	On Fall Cr. by J. G. Smith & D. C. Blanks	425	•	•
*Edwards, William D.	410	On Cumberland R. by J. C. Weakley	1400	•	•
Evans, Elizabeth	80	On Dry Fork by H. Bearden & G. A. Nicholson	560	2	1000
*Evans, F. S.	--	--	--	-	-
*Evans, William D.	--	--	--	-	-
*Fambrough, A. H.	--	--	--	-	-
Fambrough, J.	100	On the waters of Fall Cr. by J. G. Smith	350	•	•
*Fambrough, L. G.	--	--	--	-	-
*Fambrough, Robert	--	--	--	-	-
*Frazier, Howell	203	On Dry Fork Cr. by Isaac Frazier	1700	1	800
*Gossett, G. W.	9	On Cumberland R. by E. Moseley	125	1	700
*Gupton, Cooper	259	On Dry Fork bounded by R. Major	1500	1	1000
*Gupton, John W.	--	--	--	-	-
*Gupton, Thomas	43	Onn Dry Fork by J. C. Jones & G. A. Nicholson	220	•	•
Hale, Mary	--	--	--	6	4500
*Harris, G. W.	--	--	--	-	-
Harris, Nancy	102	On Dry Fork by Thos. Bell & Jas. Jones	510	•	•
*Hollis, H. R.	--	--	--	-	-
*Hollis, William K.	--	--	--	-	-

1856 CHEATHAM COUNTY TAX LIST DISTRICT 7

NAME	ACRES OF LAND	DESCRIPTION OF LAND	\$ VALUE OF LAND	SLAVES	VALUE
Hunt, John W.	12	On Dry Fork by C. Gupton	72	*	*
Johnson, Mary	21	On Dry Fork by Cooper & A. Gupton	100	*	*
*Johnson, W. A.	--	--	--	-	-
*Jones, J. C.	--	--	--	-	-
Jones, James	112	On Dry Fork of Half Pone by John Teasley	560	1	700
*Jones, James C.	45	On Dry Fork of Half Pone by Thos. Gupton	275	*	*
*Jones, Robert	--	--	--	-	-
Knox, Nancy	200	On Dry Fork by W. J. Nicholson	1000	*	*
*Knox, S. P.	--	--	--	-	-
*Lewis, H.	--	--	--	-	-
*McDaniel, Thomas	--	--	--	-	-
*Major, Robert W.	95	On Dry Fork by Nancy Knox	475	*	*
*Miles, Henry W.	--	--	--	-	-
*Miles, M.	--	--	--	-	-
*Miles, T. J.	--	--	--	-	-
*Miles, W. H.	--	--	--	-	-
*Nicholson, G. A.	300	On Dry Fork by J. D. Stewart	2000	1	800
*Nicholson, William J.	204	On Dry Fork by Cooper Gupton	1500	1	800
*Plaster, M. T.	--	--	--	-	-
*Perdue, James L.	--	--	--	-	-
Plaster, Mrs. T. J.	128	On Fall Cr. by Wm. Clifton	600	*	*
*Plaster, William M.	100	On Fall Cr. by S. Stewart	500	*	*
Robertson, S. G. (heirs)	133	On Half Pone Cr. by D. E. Barton	1000	*	*
*Smith, James G. Esqr.	257	On Fall Cr. by J. C. Weakley	1000	*	*
*Smith, J. W.	--	--	--	-	-
*Smith, John W.	--	--	--	-	-
Smith, Sarah	115	On Dry Fork by William Clifton	600	*	*
*Smith, William W.	--	--	--	-	-
*Stewart, James D.	225	On Dry Fork by G. A. Nicholson	1600	*	*
*Stewart, Robert	--	--	--	-	-
*Stewart, Shelby	135	On Fall Cr. by Jas. Stewart	1200	*	*
Sutton, Letty	40	On Half Pone Cr. by R. Barton	200	*	*
*Thaxton, F. M.	--	--	--	-	-
*Watts, James	--	--	--	-	-
Weakley, James C.	400	On Cumberland R. at Newton Warehouse	2500	*	*
*Weakley, John	--	--	--	-	-
*Weakley, R. H.	94	On Half Pone Cr. by T. J. Weakley	750	*	*
*Weakley, R. L.	--	--	--	-	-
*Weakley, W. D.	--	--	--	-	-
*Whitworth, William	--	--	--	-	-
Williams, James H.	1913	On Cumberland R. by J. S. Major	17,000	17	13,000
<u>7,545</u> acres			<u>\$54,052</u>	<u>40</u> slaves	<u>\$31,350</u>

1856 CHEATHAM COUNTY TAX LIST DISTRICT 8

NAME	ACRES OF LAND	DESCRIPTION OF LAND	\$ VALUE OF LAND	SLAVES	VALUE
*Alexander, H.	--	--	--	-	-
*Anderson, D. W.	--	--	--	-	-
*Anderson, J. T.	--	--	--	-	-
*Anderson, J. W.	--	--	--	-	-
*Anderson, R. W.	--	--	--	-	-
Batson, S. C.	260	On Barton's Cr. by A. S. Williams	1500	•	•
*Charlton, James	--	--	--	-	-
Collins, Anthony	--	2 mills	500	7	6100
*Collins, David	--	--	--	-	-
Collins, John (marked out)	--	--	--	-	-
*Daniel, John M.	--	--	--	-	-
Davis, Ellen	100	On the ridge bound by David Jones	600	•	•
Eleazer, Levy	139	On the Cumberland River	1380	•	•
*Hagewood, H. D.	--	--	--	-	-
*Hagewood, J. D.	--	--	--	-	-
*Hagewood, John D.	--	--	--	-	-
*Hagewood, N. P.	781	On the Cumberland R. by D. Jones	7500	3	2400
*Hagewood, William	--	--	--	-	-
*Harris, James M.	126	On Barton's Cr. by W. H. Williams	625	•	•
*Harris, S. C.	328	On Barton's Cr. by J. M. Harris	1500	•	•
Jackson, McKennan and Company	1638	(No description)	3300	•	•
Jones, D. D.	257	On Cumberland R. by Hagewood	2500	•	•
*Jones, David	257	On Cumberland R. by Hagewood	2500	2	1800
*Mayberry, G. W.	--	--	--	-	-
*Mayberry, J. A.	--	--	--	-	-
*Mayberry, Thomas E.	130	On the branch by McKennan	1400	•	•
*Weakley,, David	--	--	--	-	-
*Williams, A. S.	200	On Barton's Cr., by S. C.	1500	4	3500
Williams, W. W. (Heirs)	--	--	--	-	-
Williams, William A.	220	On Barton's Cr. by A. S. Williams	1500	4	3500
4,455 acres			\$26,105	20 slaves	\$16,800

MINUTES OF THE SUPERIOR COURT
OF
NORTH CAROLINA AND MERO DISTRICT
(PART ONE 1788-1798)

(Continued from Fall issue. Copied exactly as written in the WPA record)

*[Editor's Note: The many ****_ used in these minutes indicate the original was in bad condition when first copied by the WPA. It is recommended whenever an item of particular interest is found that the microfilm for these minutes be consulted. The microfilm is filed with the Davidson County, TN records in the Tennessee State Library and Archives.]*

THE TERRITORY

vs.

JOHN HARDIN

Indictment Perjury -

(p43) Friday -

The prisoner being called to the Bar was Charged on the Bill of Indictment Which is as follows
(viz)

The jurors for the state upon their oaths present that John Hardin Esquire, late of the County of Sumner and district of Mero, on the second Monday, of April being the day of said Month and in the year of our Lord one thousand seven hundred eighty seven the Worshipful Court of Sumner then setting for the dispatch of Public Business for said County, he the said John in his proper person came into the said Court and craved letters of Administration to be Granted to him mto Administer on the Estate of one William Price, deceas,d Which was Granted to him, by the Worshipful Court of Sumner at the Said April Term, as aforesaid and he the Said John, then & there was Sworn in due course of law, and did take his Corperal oath upon the Holy Gospel of God (the said Court having sufficent power to Adminaster and oath to the Said John in that behalf that he the Said John, Would Well and Truly, Administer upon all and Singular the rights and Credits Goods and Chattels of the said Estate of the Wm. Price Ded. and a true inventory to return, Within Ninty days therefrom at the Next Court held, on the County of Sumner being on the Second Monday in July in the year of our Lord one thousand seven hundred and eighty seven, he the Said John so being Sworn, Not having the fear of God before his eyes but being Moved and seduced by the instigation of the devil little regarding the laws of the State or the penalties in the same Contained but his aforesaid oath regarding as nothing falsly Wittingly, wilfully, and Corruptly did return the following false inventory of the said Estate, of the Said William Price de,d as aforesaid, in the following words, (the inventory not remitted) and he the said John then and there before the said Court as aforesaid being sworn (the said Court having full Power & Authority to adminster an oath to the said John in that behalf) Not having the fear of God before his eyes but being Moved and seduced by the Instigation of the devil not regarding the laws of the state or the penalties in the same Contained & his aforesaid oath Esteeming as Nothing upon his oath aforesaid did swear that the said inventry as aforesaid, was a Just and true inventory of all the Goods and Chattles Rights and Credits of the Estate of the said Wm Price de,d Whereas in truth and fact there reminded *___ hands of the Said John Administration of the said Estate of the *___ William Price de,d forty six pounds, thirteen Shillings arising from the following property of the said De,d Estate Sold at Publick Sale, to wit, five Yds Linen Blankett sheets one Cow & Calf-twenty lb. Bacon, three pecks of Salt, a Cow hide, one horse S. C. and so the Jurors aforesaid, upon their oath aforesaid, do say that the said John Hardin Esq. on the day of April in the year of our Lord one thousand seven hundred & eighty Seven at the Court Aforesaid, in the County Aforesaid on his oath aforesaid before the said Court so as aforesaid (having full & sufficent power to Adminstrar oath to the Said John the said as aforesaid) in Manner Aforesaid of his wecked Mind falsley, Maliciously, wilfully & corruptly did commit wilful and corrupt perjury to the Great displeasure of Almighty God, in contempt of the Laws of the state, to the Great damage of the orphant of the de,d Contrary to the Statute in that care made & provided and against the peace and dignity of Said State, to Which Charge the defendant John Harden Plead Not Guilty and for his Trial put himself upon the Country Thereupon Came a Good and lawful Jury (viz)

William Wyer, William Donalson, Thomas Talbott, Jame Hall, Joseph Hanah, Edward Swanson, Jonas Manifee, Elisha Rice, Zebulon Hubbard, Thomas Taylor, Thomas Simson, John Buckhanon Who being impannelled & Sworn to try the issue of Traverse Consil being heard Witnesses introduced & Examined Say that they find the prisoner at the Bar John Hardin the Elder not Guilty of the perjury as Charged in the Bill of indictment - -

(p-44) Friday - Indictment - Plea Not Guilty

Jury - Found Guilty by the Jury

THE TERRITORY

vs

JOHN COLLINS

Indictment T. A. B.

The defendant John Collins being Called to the Bar was Charged on the Bill of indictment Which is as follows viz

The Jurors for the Territory upon their oaths present that John Collins late of the County of Davidson and district of Mero, Taylor, on the twelfth day of April in year of our Lord, one thousand seven and ninty one With force and arms at the County aforesaid, in the district aforesaid in and upon one John Rains then and their being in the peace of God and the said Territory and assault did Make and him the said John did beat, wound and ill treat, so that his life was Greatly dispaired of and other Wrongs to him the said John then & there did to the Great damage of him he said John to the Evil example of all others in the case offending and against the dignity of the Government of the Said Territory to which Charge the defendant John Collins plead not Guilty and for his trial put himself upon the Country, thereupon Came a Good a lawful Jury (viz)

William Blackamore, James McKain, Jesse Huston, William Overall, Fred Stump, Pleasant Lockett, Sam,l Crockett, Wm. Lusk, James Ford, Charles Snyder, William Stuart, Martin Duncan, who being impannelled and Sworn truly to try the issue of Traverse between the Territory and said Collins the Council being heard, the Witnesses being introduced (viz) McCutcher and Examined, say they find the defendant John Collins Guilty of the Trespass assault and battery as Charged in the bill of indictment - - -

Ordered that a Subpoena issue to the Sheriff of Davidson Commanding him to sommons to appear on Monday Next as to bring with him Nansey Lucas, Betsey Lucas & Leah Lucas the orphan Children of David Lucas dec'd and cause why they Would not be removed from him -

Indictment - Plea Not Guilty - Jury

Found Not Guilty

TERRITORY * _____

vs

JAMES CRABTREE

Indictment Horse Stealing

The prisoner James Crabtree being Called to the Bar was Charged on the Bill of indictment which is as follows (viz)

The Jurors for the state (as this bill was found before the Cession) upon their oaths present that James Crabtree & William Crabtree, Yeoman, late of the County of Davidson and district of Mero on the first day of May in the year of our Lord, one thousand seven hundred and Ninety at the district aforesaid in the county aforesaid one mare of bay Coulor, of the value of six pounds of the proper Goods and Chattels of one Robert Montgomery one Bay Horse Colt of the Value of six pounds, of the Goods and Chattels of the said Robert Montgomery, then and there being found feloniously did take steal and lead away contrary to a Statute made & provided and against the peace and dignity of said state, to which Charge the defendant plead Not Guilty and for his trial put himself upon the County therefore there came a Good and Lawful Jury (viz)

William Wyer, William Donelson, Thomas Talbot, Joseph Hanah, Edward Swanson, Jonas Manifee, Qubulon Hubbard, Thomas Taylor, Thomas Simson, John Buckhannon, William Ellis, John Cockeral, who being impannelled & sworn truly to try the issue of traverse between the state and the prisoner at the Bar say they find the prisoner at the Bar not Guilty of the Charge of Grand Larceny as Charged in the Bill of Indictment.

(p-45) Friday -

The Hon,ble Court adjourned till tomorrow Nine O'clock

Saturday Morning

The Hon,ble Court met agreeable to Adjournment -

PRESENT

the Honble John McNairy, Esquire S. C. -

NICHOLAS COONROD

vs

PHILLIP TRAMEL

Judgement for L 63:0 3/4

The Special Verdict a

Trial de Novo be had - -

Motion for a New Trial - A New Trial Granted -

THOMAS HAMPTON

vs

JOHN BOYD & JAMES FOSTER

Verdict having

been Entered for

the defen.ts -

John Overton, and James Cole Montflorenc Attornies in behalf of the Plaintiff filed reasons for a New Trial, to wit, that the Verdict is contrary to the Evidence the Justice and Equity of the case, and also an affidavit of the Plaintiff stating a Confession of the parties defen.ts since the trial, that the Negro for which the suit was commenced was in the House at the time the affray happened, Which the Plaintiff is advised would be materially to his benefit on a new trial ordered that a New Trial be Granted by the Plaintiff paying the Costs of this term -

SAM,L ALLEN

vs

ELISHA RICE

Judgment having been entered up for the plaintiff Josiah Love Esauire Attorney for the defendant *-----reasons for an arrest of Judgment to wit, because the Writ is a * _____ issued many months before the tests of the same, and made * _____ same term js was issued from, reasons withdrawn and stay of execution for six months for debt - -

RISTON & SHELBY

vs

WILLIAM TAITT

Verdict having been had for the Plaintiff Howel Tattum Attorney for the defendant filed reasons for a new trial, viz that the Verdict of the Jury is Contrary both to law and Evidence Councilies being heard on both sides, it is the opinion of the Court that a new trial should be Granted, Ordered therefore S. C. _____

ROBERT TAITT

vs

SAMSON WILLIAMS

Verdict being

withdrawn

had for the Plaintiff the motion for a new trial was

JOHN MINOR

vs

SAM, L MARTIN

Plea is abatement _____

(p-46) Saturday

John Overton Esq. Attorney for defendant filed his plea on affidavit viz that Wm. A. Pees who hath signed the prosecution bond in the suit as attorney in fact for said Minor, hat no power of Att.y from said Minor to authorize him to act in that behalf, also that the writ or original prosess in this suit bears Test out of Term Time when it ought to have been by law tested during the term and this he is ready to Verify Council being heard on both Sides it is the opinion of the Court that the plea in Abatement be overruled -

Martin Duncan a Juror is Excused from Serving any longer this term

The Hon.ble Court Adjourned till Monday 10 oclock -

WARNING:

GENEALOGY POX: Very contagious to adults.

SYMPTOMS: Continual complaint as to need for names, dates and places. Patient has blank expression, sometimes deaf to spouse and children. Has no taste for work of any kind, except feverishly looking through records at libraries and courthouses. Has compulsion to write letters. Swears at mailman when he doesn't leave mail. Frequents strange places like cemeteries, ruins, and remote desolate country areas. Makes secret night calls and hides phone bill from spouse. Mumbles to self. Has strange far-away look in his/her eyes. NO KNOWN CURE.

TREATMENT: Medication is useless. Disease is not fatal but gets progressively worse. Patient should attend Genealogy workshops, subscribe to Genealogy Magazines (AND BELONG TO MIDDLE TENNESSEE GENEALOGY SOCIETY). Patient should be given quiet corner in the house where he/she can be alone. The usual nature of this disease is the sicker the patient gets, the more he enjoys it.

Contributed by Anne Green Townes

TENNESSEE SUPREME COURT RECORDS

(Contributed by Betsy Ragsdale and Gale Bamman, CG)

**Supreme Court Records, Box 153
Middle Tennessee, 1867**

**Wiley S. Embry and Merrell W. Embry
vs Malinda R. Frierson and others**

(Original Bill filed in Maury County Chancery Court on
22 October 1866)

Complainants Wiley S. Embry and Merrell W. Embry, citizens of Maury County, Tennessee, would respectfully state ... that John V. Frierson died intestate and James H. Frierson was appointed his administrator by the Maury County Court. That said intestate died seized and possessed of a tract of land of about 330 acres situated in the 10th Civil District of said state and county on the waters of Greens Lick Creek ... That said intestate left surviving him as his heirs at law and next of kin his widow Malinda R. Frierson and the following children, to wit: Mary S. Blakeley, wife of Robert T. Blakeley, Martha P. Smizer, wife of Joseph W. Smizer, and William J., Thomas, Edward C. and Albert D. Frierson. The said Thomas Frierson and Mary S. Blakeley and her husband are citizens of the State of Mississippi, the said Martha P. Smizer and her husband are citizens of the State of Arkansas and all others of the persons herein named are citizens of Maury County, Tennessee. The said Martha P. Smizer has died and left surviving her an only child an infant of about 6 years of age without a regular guardian and who resides now in Maury County, Tennessee with her relatives.

**Supreme Court Records, Box 153
Middle Tennessee, 1867**

Belinda Stone vs Robert Tindall et al

(Original Bill filed in Davidson County Chancery
Court)

The Bill of Review and Bill in the nature of a Bill of Review and Bill of Complaint of Belinda Stone lately a citizen of Tennessee but now a citizen of Kentucky vs Robert Tindall, William Tindall, Catherine Tindall, Elizabeth Tindall, Mary Morgan, George W. Couch and wife Lucinda Couch, Agnes Tindall and Martha Norvell (formerly Martha Dowdy) and her husband George W. Norvell, all residents of Davidson County, humbly complaining sheweth to your Honor that on the 17th of November 1859 the said defendants Catherine Tindall and Elizabeth Tindall exhibited ...a Bill...against your oratrix and also against all of the

other parties named above as defendants to this Bill except G. W. Norvell, who hath since that time intermarried with the defendant Martha.... The said defendants Catherine and Elizabeth ...after alleging the death of their father John Tindall on or about 29 March 1853 leaving a will which disposed of a portion of his estate, but dying intestate as to the remainder and after alleging that in his said will the said John Tindall bequeathed to his widow Agnes Tindall the house and lot on College Street in which they resided during her natural life, goes on to state that the defendant Robert Tindall in December 1855 for the first time produced the will of the said John Tindall and had the same regularly proven and recorded....

**Supreme Court Records, Box 151
Middle Tennessee, 1866**

Bank of Tennessee vs Charles L. Nelson
(Original Bill filed in Davidson County Chancery Court 1 January 1857)

Complainants, President and Directors of the Bank of Tennessee, at Nashville show your Honor that on the first day of May 1854 they recovered two judgements against Charles L. Nelson in the Circuit Court of Maury County, Tennessee ...that upon all of said judgements executions have been issued to Rutherford the county of said Charles Nelson's residence and returned *nulla bona*.

They show further that said judgements are still in full force and unsatisfied and they know of no other property out of which they can be satisfied except as herein after stated and shown.

They now show and state that Mathew Nelson late of Rutherford County departed this life having made and published a will which has been proven and recorded, that Nancy C. Nelson is his widow ...that said Mathew Nelson died seized and possessed of a tract of land in said county of Rutherford, Tennessee on Hurricane Creek, District #3.... They show further that by said will the testator devised his entire estate real and personal to his widow the said Nancy C. for life and after death to his children: thomas Nelson, Charloes L. Nelson, Henderson Nelson, Fletcher Nelson, Mathew Nelson, Elizabeth Nelson, Mary Nelson and Marion Nelson of Rutherford County and Samuel Nelson of Cannon County, William D. Nelson of Shelby County, and N. B. Nelson of Bedford County to be equally divided between them.

Supreme Court Records, Box 149

Middle Tennessee, 1861

George Porter and others

vs

J. A. Blakemore and others

(Original Bill filed in Bedford County Chancery Court
4th Monday February 1861)

Your orators George Porter, Jr., Martha Porter, and Jane Bell Porter would respectfully represent to your Honor that many years ago their mother Rose Porter by whom they sue now as their next friend -- was held in slavery, as was also their father George Porter, Sr. by one John N. Porter, that the said George Porter by his industry and energy and good habits so won on his master's affections as to induce him to grant the said George his freedom or to emancipate him upon his paying to his master a stipulated price greatly below his actual value, that afterwards said George Sr. by his industry and economy was enabled to purchase his wife Rose Porter and set her free or emancipate her, that after this they were regularly and lawfully married as free persons....

Supreme Court Records, Box 153

Middle Tennessee, 1866

Crockett vs Mallory et al

(Original Bill filed in Williamson County Chancery Court)

John B. Crockett, executor of the last will and testament of John Mallory, dec'd., Sarah Mallory and Lucindy Mallory, all residents of Williamson County in said State, bring this their bill of complaint against Sarah Mallory, Mallie Mallory, Martha Mallory and Alice Mallory, children of John Mallory, Jr., dec'd., all four of whom are minors and have for their general guardian Catharine B. Mallory their mother and Catharine B. Mallory, all of Dyer County, Tennessee, and James Willie Mallory, son of James Mallory, dec'd. and a minor, and resident of the State of Kentucky and has for his general guardian Alexander Moore of the County of Williamson in said state and Alexander Moore defendants.

And thereupon your orator John B. Crockett, executor of John Mallory, dec'd., and your oratrices Sarah and Lucindy Mallory, humbly complaining shew unto your honor that on the 28th day of June 1860 John Mallory Sr. departed this life after having first made and executed his last will and testament and nominated as the executor thereto your orator John B. Crockett; that on the 3rd day of July 1860, said will was duly proven in and before the County Court of Williamson County, and your orator John B. Crockett duly qualified.... That said John Mallory, Sr. departed this life leaving him surviving as his widow your oratrix Sarah Mallory and his only living child your oratrix Lucindy Mallory, and as his grandchildren Sarah Mallory,

Mollie Mallory, and _____ [blank] Mallory, children and daughters of John Mallory, Jr., dec'd. and James Willie Mallory, son of James Mallory, dec'd. That the testator died seized and possessed of a considerable amount of property personal and real, consisting of a number of negroes..., a tract of land in Williamson County containing about 230 acres, a tract of land lying in Dyer County in said State containing about 500 acres....

Supreme Court Records, Box 153

Middle Tennessee, 1867

A. C. M. Lester et al vs N. P. Corbitt et al

(Original Bill filed in Davidson County Chancery Court)

...it appearing to the satisfaction of the court that the deed of gift of July 71, 1847 made by Royal Lester was executed for the purpose of hindering, delaying and defrauding his creditors, and was therefore void as to them..... And it further appearing to the satisfaction of the court that defendant James Lester redeemed the land as trustee for his father Royal Lester, and complainant Andrew C. M. his brother and his sister Emiline and for his own benefit as one of the children of Royal Lester.... That the defendants who purchased... from James Lester through his sheriff's deed.... And it further appears to the satisfaction of the court that the quit claim deed, purporting to be signed by complainant Andrew C. M. was never signed by him, and was a fraud as to him, but that Joseph Mills and his wife Emiline (formerly Emiline Lester and daughter of Royal Lester), the father and mother of complainant George H. Mills, who was born prior to that time, did sign said quit claim deed, quit claiming and relinquishing all their right title and interest in and to said land to defendant James Lester.

Supreme Court Records, Box 149

Middle Tennessee, 1866

Elizabeth Hawkins, et al vs William L. Murfree

(Original Bill filed in Davidson County Chancery Court)

The Bill of complaint of Elizabeth Hawkins, a feme covert, and her infant children Loulie, Irene, and Marion Hawkins, by Edward H. East, their next friend, all citizens of Davidson County, State aforesaid, against William L. Murfree, Administrator of John Sigler, dec'd., Thomas McCall, and wife Henrietta McCall and their infant children, John, Thomas, Martin, Ida, and Henrietta McCall, Charles E. H. Martin, Richard McCane[?], Sen., Jacob McGavock, Aris Brown, The Nashville Building Association, The city Building and Loan Association, Thomas Chadwell, Executor of E. H. Childress, dec'd., The Planters Bank of Tennessee, Steven Childress, Trustee of Charles E. H. Martin, George B. Goodwin, Trustee of Louisa Turner, and husband James Turner, all of whom are citizens and residents of Davidson County, State aforesaid,

and James M. Hawkins, husband of Complainant Elizabeth, and father of the other Complainants, a non-resident of the State of Tennessee, and resident as hereinafter stated, and all other creditors of said John Sigler, dec'd.

Complainants would now show that heretofore on the 17th day of May 1855, John Sigler, now deceased, the father of Complainant Elizabeth, and defendant Henrietta McCall made a deed of gift of that date herewith filed...made without other consideration than love and affection..by said deed of conveyance her said father conveyed to defendant Thomas A. McCall the following property, to wit: between fifty and sixty acres of land adjoining the southwest portion of the City of Nashville...and one hundred feet of land lying upon High Street in the City of Nashville...also all stocks owned by him in Associations of all kinds...together with a large number of slaves and being all the property thereowned by him save and except a house and lot conveyed by said John Sigler at or about that time, by marriage contract to Elizabeth Burton, now Elizabeth Sigler ...that all said property is conveyed in trust to said Thomas McCall for the benefit of Complainant Elizabeth and her sister Henrietta and probably their children....

Supreme Court Records, Box 151
Middle Tennessee, 1866
H. P. Keeble vs James F. Fletcher et al
(Original Bill filed in Rutherford County Chancery Court)

The Bill of complaint and injunction of H. P. Keeble against James F. Fletcher, David M. Currin, R. S. Currin, George Chapman and wife Laura, Elizabeth Currin, Amanda A. Currin and Adelia Currin, filed in the Chancery Court at Murfreesboro.

Your orator represents that all the above mentioned persons, except J. F. Fletcher are distributees of the estate of the late J. Currin, dec'd., the said Chapman in right of his wife formerly Laura Currin....

Supreme Court Records, Box 149
Middle Tennessee, 1861
S. W. Summers and wife Frances
vs
Jane C. Wilson and others
(Original Bill filed in Coffee County Chancery Court)

Frances Summers, formerly Frances Tate, and her husband, S. W. Summers, both citizens of Marion County, Tennessee, complainants against Jane C. Wilson, a citizen of Coffee County, Tennessee, defendant.

The complainant would respectfully show to the court that her uncle John Wilson who formerly lived in Coffee County, Tennessee, sometime before he died made and published his last will and testament in which he appointed his sister Jane C. Wilson his executrix, who was qualified as such...

Supreme Court Records, Box 149
Middle Tennessee, 1861
Abel Rushing vs A. Stone and R. H. Mason
(Original Bill filed in Cannon County Chancery Court)

This if your honour please was a bill filed by complainant against defendants to enjoin the collection of over \$3,000.00 and for construction [?] of a deed of gift etc. under the following circumstances:

Rushing purchased of Archibald Stone a tract of land in Cannon County for which the note enjoined was given as part of the purchase money. Stone had purchased the land from one Washington Massie and took a deed with special warrentee Massie had purchased from John and William McAdow and Elizabeth A. Pendleton wife of Benjamin Pendleton and took their deed with covenants of general warrentee. Eliza A. Pendleton claimed some 60 or 80 acres of the land....

Supreme Court Records, Box 149
Middle Tennessee, 1861
Melton et al vs Melton et al
(Original Bill filed in Cannon county Chancery Court)

The Bill of Complaint of William J. Melton, William Grizzle and wife Polly, James Blair and wife Caroline, James Grizzle and wife Martha, all citizens of Cannon County and Green Melton, a citizen of Green County, Missouri against John W. Melton, Jacob Hawkins, one of the administrators of William Melton, dec'd., Mary E. Melton, a minor, and James H. Wood is her regular guardian, S. M. Gunter, the husband of said Mary E., Joseph D. Melton, Jr., a minor, and Joseph D. Melton, Sr. is his regular guardian, and Ancel Melton,, also administrators with said Hawkins, all citizens of Cannon County.

Respectfully complain, your Orators and Oratrixes shows your honor, that about the 22nd January 1858 William Melton dec'd. swapped a tract of about 134 acres of land to defendant John W. Melton and was to receive in lieu thereof from J. W. Melton the same number of acres....

Supreme Court Records, Box 151

Middle Tennessee, 1866

J. M. Elrod and wife vs William C. Leech et al
(Original Bill filed in Cannon County Chancery Court
November 1866)

The Bill of Complaint of J. M. Elrod and his wife Paralee D. Elrod, both citizens of Rutherford County, Tennessee complainants against William C. Leech, a citizen of Cannon County, and W. S. Rhodes, J. H. Rhodes, citizens of Wilson County, and A. W. Rhodes and W. S. Rhodes, executors of C. H. Rhodes dec'd., also citizens of Wilson County, and Martin Forest Rhodes Rosa P. Rhodes both minors Quichanous[?] Allen, William A. Allen, James E. Allen and Rufus Allen, the three last minors, Samuel H. Craddock and the said W. S., J. H. and A. W. Rhodes heirs at law of C. H. Rhodes, dec'd. and citizens of Wilson County, Tennessee, defendants.

Supreme Court Records, Box 152

Middle Tennessee, 1861

Richard Phillips and others

vs

K. T. and T. B. Allison, Executors

(Original Bill filed in Bedford County Chancery Court
19 August 1816)

The Bill of complaint of Richard Phillips, Samuel Phillips, William B. Phillips, sons and children of Bennett Phillips, deceased, and of William Phillips, Sophronia Duncan and her husband ____ [blank] Duncan, the said William and Sophronia being children of Isaac M. Phillips, dec'd., who was a son of said Bennett Phillips, and Nancy Vancleve, and her husband Stephen Vancleve, the said Nancy being a daughter of said Bennett Phillips, dec'd., and Spencer Hill, John Hill, Samuel Hill, Joseph Hill, William Hill, Jeremiah Hill, Sarah Vancleve, and her husband William Vancleve, Nancy Holden and her husband Spencer Holden, Frances Gwinn and husband ____ [blank] Gwinn and Martha Potts and husband Richard Potts, Catherine Renshaw and husband ____ [blank] Renshaw and Mary Nance and husband Wiley Nance, the said Spencer, John, Samuel, Joseph, William, Jeremiah, Sarah, Nancy, Frances, Martha, Catherine and Mary, being children of said Bennett Phillips, dec'd., Kimbro T. Allison and Thomas B. Allison, executors of Thomas Allison, dec'd. in the Chancery Court at Shelbyville.

Your orators and oratrixes would respectfully represent to your honor that said Bennett Phillips dec'd. had a daughter who intermarried with one Thomas Allison. Her name was Rebecca and that she had no children, being advanced in life when she married said Allison who was a widower and the father of several children....

Supreme Court Records, Box 152

Middle Tennessee, 1857

Hollowell and wife vs Wade
(Original Bill filed in Rutherford County Chancery Court)

The Bill of Complaint of Alexander McDougal and Eleanor his wife of the County of Gibson in the State of Tennessee, complainants against Julius C. Wade, Ozias H. Wade, William Wade, Charles R. Wade, Elizabeth C. Wade, John W. Wade, William B. Hollowell and Sarah C. his wife and Joseph B. Johns and Margaret his wife and Sarah C. Wade of the County of Rutherford, and Lewis Wade of the County of Gibson, and James E. Williamson and Robert Williamson and S. A. C. Williamson of the State of Mississippi, defendants.

Humbly complaining sheweth unto your honor the orator and oratrix the said Alexander McDougal and Eleanor his wife, that John C. Wade, late of said County of Rutherford, on the 26th of December 1855 departed this life leaving surviving him his widow the defendant Sarah C. Wade and as his heirs at law and next of kin his children the complainants Eleanor McDougal and the defendants William Wade, Julius C. Wade, Sarah C. Hollowell, Margaret Johns, Charles R. Wade, Elizabeth C. Wade, and John W. Wade, the last three of whom are infants under the age of twenty-one years, and for whom the said Ozias H. Wade is general guardian and his grandchildren, the defendants J. E. Williamson, R. B. Williamson, S. A. C. Williamson, the children of his deceased daughter Lucretia Williamson, who are non-residents of the State of Tennessee and infants under the age of twenty-one years....

Supreme Court Records, Box 152

Middle Tennessee, 1865

Frierson, Admr. of Embry, vs Harris

In the case of J. G. Frierson, administrator of W. B. Embry, dec'd. against G. T. Harris, William M. Sullivan, W. B. Kannon and Thomas J. Whitaker at the December Term 1865 of the Supreme Court at Nashville a judgement was rendered against said G. T. Harris and others in favor of the said Frierson as Administrator aforesaid for \$520.00 and costs of suit. And it having been suggested to me that the said Giles T. Harris is dead and that William L. Harris, C. C. Harris, Robert G. Harris, Mary Harris, Alice Harris,, and Claibourn Harris, and Rowena Moore are his heirs at law....

QUERIES

STRONG: Who were the children of Sherwood Stong b. ca 1762 VA? Sherwood and wife were listed in the 1820 census of Davidson Co, TN as being 45+. They had seven sons and two daughters. Who was his wife and when did she and Sherwood die? I think perhaps this Sherwood was the same Sherard Strong listed in the 1787 Poll Tax and census of Buckingham Co, VA. Any idea or help will be greatly appreciated, all postage will be refunded. Gladys Turman/Rt #2, Box 1640/Mannford, OK 74044

MCCORMACK/MCORMICK: Need parents and/or family of Robert McCormack who was from Montgomery Co, TN. Born July 1878? - d. 1956 Davidson Co. Married (2nd marr) Rosa Bateman in Dickson Co 1913 and lived in Pardue until moving to Davidson Co ca 1918. One dau from this marriage named Dotty (Dorothy) who m. Thomas Case Elder in 1936. S. Wayne Elder/725 Myhr Drive/Nashville, TN 37221

CHERRY, JOEL: Need information on my GGG grandfather, Joel Cherry (b. 1776 NC Martin?). Wife, Sarah--b. 1785 NC Rowan? Who were their parents? Any info appreciated, will exchange data. Cherry Williams/1000 Rocky Canyon Rd/Arlington, TX 76012

SMITH, WOMACK, HAWKINS: Looking for info about my husband's ancestors. His grandfather was John Smith (wife Nancy?) who lived in Warren Co TN in 1820's. John's son was Jesse Smith (26-Nov-1825 - 8-Jun-1890) whose wife was Charlotte Womack (26-Nov-1825 - 20-Mar-1916). Info also needed on my husband's mother, Ada Hawkins (father's name may have been John) who married his father, Whitson Smith 28-Oct-1888 Lawrence Co TN. Ada's sisters were Em Shannon, Delia Rhodes and Tran Manley. Will answer all correspondence and gladly pay for xeroxing information. Mrs. Emily Smith (Fred L.)/4217 Marietta St. PO Box 4/Powder Springs, GA 30073

NICHOLS, COCHRAN: Seeking info on Joshua NICHOLS b. 1793 SC and his wife Elizabeth COCHRAN b. 1808 NC. Living in Rutherford Co TN in 1830 near Jno. COCHRAN. Was he related to Elizabeth? They lived in Bedford Co TN before 1840. Listed in Marion Co AL from 1850 thru 1870. Children were: Jane Kathrine b. 1830, m. Christopher C. Roller; Lucinda b. 1831, m. William T. Rideout; Matilda b. 1832; Claracy b. 1835, m. Riley Ables; James F. b. 1837; Sarah A. b. 1841; Jasper b. 1843; Mary E. b. 1846, m. James Wigginton; Calvin b. 1849, m. Mary Nichols. Reply to Jerry W. Murphy/PO Box 141/Collinwood, TN 38450

VAUGHAN: Need proof Thos & Mildred H. Vaughan (HH920, Dist 10, Wilson Co 1850 census) were parents of Mary A. (m. Sidney Forsher); Elizabeth (m. James Powell); Frances C. (m. W. M. Webb); Lucinda M. (2nd wife Gregory D. Johnson); Martha A. (m. Caleb H. Smith); William P.; Thomas H. (m. Mary Ann Clifton 1859); John T.; all listed as heirs of Thomas Vaughan, dec'd. Wilson Co, 1859 (selling land to John J. Hartsfield). Was this Thomas & Mildred H. Vaughan the same Thomas m. 12 Mar 1810, Halifax Co VA, Millie Perman? Need info to separate this family from that of Thomas Vaughan, son of Thomas & Mary T. (Hillford) Vaughan. Will share information. Billie McDonald Goldwire/819 Elizabeth Dr/Forest Park, GA 30050-1360

KILLMAN: Seeking info on my g-grandmother, Sarah (Scott) Ashlock Killman, b. ca 1810 in Overton Co, TN. Married 1) Jesse Ashlock on 15 Mar 1842 in Overton Co; 2) Wesley Killman on 17 May 1849. Was in Overton County in 1850 and 1860, Jackson Co, TN in 1870 and Cumberland Co, KY in 1886. Killman abandoned her ca 1871. Who were her parents? When and where did she die? Ty Ashlock/2923 San Mateo NE/Albuquerque, NM 87110

MENEFEE: Need the names of parents and siblings of Thomas Jerome Menefee, b. Oct 1826 in MS (1870 census), listed in 1850 census in household of James N. Menefee (not his father) in Montgomery Co., TN, m. Mary I. Sturdevant Davidson Co, TN in 1852, and lived the rest of his life in Davidson Co, dying in 1901. Valere Potter Menefee/PO Box 664/Brentwood, TN 37024

EATON, STOCKTON, SMITH, BRADLEY, HARRIS, LANDESS, HOWEL, THOMPSON, GRACE: Are J. W. and Phebe A. EATON who were in Wayne Co 1860 parents of William Henry EATON who m. Desdemona Vine STOCKTON 17 Jan 1877 in Giles Co? With which SMITH family did Vines Smith STOCKTON who m. Margaret BRADLEY live and where did he die? Vines was son of Elizabeth SMITH who divorced Benjamin STOCKTON 1816 and grandson of Wm. SMITH and Eliz. VINES. Where did Margaret's parents William & Phebe BRADLEY come from. They all lived in Giles & Lawrence Cos. Joseph T. LANDESS m. Amerrilda M. HOWELL 27 Nov 1845 Lincoln Co. Where are they buried? Their known children are Charles Stuart, R. G. & Forrest. Would love info on his parents Henry LANDESS & Grace THOMPSON. Who was Amerrilda's grandmother? Did Nancy marry a John GRACE/GROCE and then James Cunningham? These families all in Lincoln Co. Who were the parents of Sarah HARRIS m. John CHISM and d. ca 1848 in Sparta? Audrey Young/1216 Academy Drive/Arlington, TX 76013 (817)275-4896

FRIZZELL, MESSICK, GREENE, WHITE, BULLINGTON, HARRIS, YOUNG: Who were the parents of the Isaac FRIZZELL from VA who lived in Henry Co. and died in Weakley Co. in 1844? Need info on Richard MESSICK from DE who is supposed to be buried around Beech Grove, Coffee Co. JOHN P. WHITE m. MINERVA E. GREENE 27 Jan 1839 Williamson Co TN. DANIEL D. & REBECCA WHITE and MARTHA GREENE all lived in Williamson Co. Need information on these, especially who were William GREENE'S parents? JAMES B. YOUNG & RHODA HUDSON, dau of OBEDIAH HUDSON settled in Jackson Co, TN by 1814. Was his father JOHN YOUNG who d. near James not long after they moved to TN? Are WILLIAM CRENSHAW BULLINGTON & ELIZA JANE HARRIS who moved to Jackson Co in 1822 buried in Putnam Co? Was her father the DAVID HARRIS who filed a pension application in Davidson Co 1818? Robert Jason Young/1216 Academy Drive/Arlington, TX 76013 (817)275-4896

STARRETT/WITHERSPOON/LINSEY: William A. STARRETT b. ca 1812 TN prob son of Moses STARRETT & Sarah WITHERSPOON m. 1811 Sumner Co to Mary Ann LINDSEY b. 1810 TN her father Wyatt LINDSEY/LINSY/LINDSAY d. 1822 Wilson Co KY. Her mother Betsy MILLER. Who were Moses STARRETT parents, Sarah WITHERSPOON'S parents & Wyatt LINSEY'S parents: I need Help! Margie Garr/1505 Mistletoe/Mountain Home AR 72653/ 501-425-0405

HILL: John C. HILL b. 1863 Wilson Co TN, son of Singleton HILL b. ca 1814 VA. Singleton named first son Jesse which makes me think his father may have been Jesse Hill (listed as Jesse HELL in 1840 Wilso Co TN census). Looking for connection with any HILLS Wilson Co. John C. Hill m. an ANDERSON with middle TN roots also. Mrs. Marvin Winfield Hill/3980 Electric Ave/San Bernardino CA 92405

THACKER: Seek info on parents & other relatives of Ezekiel Evans THACKER b. 1803 SC & Joel O. THACKER b. 1806; both moved from Abbeville Co, SC (?) to Coffee Co, TN along with another brother, possibly Martin J.; Joel to Christian Co, KY; all related to Thackers of Montgomery, Giles, Davidson, TN & Gwinnet Co GA; most were wagon makers. Glenda Potts Thacker/3135 Settles Rd/Owensboro KY 42303/502-926-4444

SAYNES/SAIN: Seeking data on Sayne/Sain family of Warren & Grundy Co TN; blacksmith Wm. Saynes, b. ca 1821, d. 1852/60, son or g'son of Daniel Sayne(s) & Martha DAVIS; m. Gemima STREET, dau of Bird STREET; children: Lydi Lavonna Ann m. Wm. Martin BLANCETT; Martha M., and Thomas B., and William J. (both of Warren Co). Glenda Potts Thacker/3135 Settles Rd/Owensboro KY 42303/502-926-4444

STROUD: My gr-grandfather was John Haun STROUD, the oldest son (among several children) of James STROUD and Elizabeth HAUN of of Carter Co TN. James Stroud, my gr-gr-grandfather served in War of 1812. Need info as to his service. James Stroud b. Feb 5 1790 Marlborough Co SC. His father was either Isom or John STROUD, I think the latter. Would like further info on Isom/John STROUD. Their father was Joshua STROUD who bought land on Pee Dee River in 1767 in SC. Raymond B. Stroud/PO Box 1282/Russellville, AR 72801

SINCLAIR/PURVIS: Seeing info on Benjamin SINCLAIR and Mary SINCLAIR PURVIS, siblings of Samuel SINCLAIR (1748-1838) who came to America 1820. 1895 family history state this brother & sister emigrated at an earlier date and settled "west of the Alleghanies." Samuel SINCLAIR lived first in Gaston Co NC before moving to Wayne Co TN ca 1834. Children of Samuel SINCLAIR were: Margaret (Peggy); Samuel; John; William; Gregory; and Jane who m. Alexander DICKEY. Any clue appreciated. Sandra Tedford/200 Sherry Lane/Farmersville, TX 75031

TEDFORD: Searching for name of first wife of John A. TEDFORD who was b. about 1832 McNairy Co TN. John A. TEDFORD listed in household of his parents Wm. W. & Minerva (WILLETT) TEDFORD on 1850 McNairy Co TN & 1860 Titus Co TX census. His son Robert James TEDFORD supposedly b. either 1858 or 59. Family tradition states mother died when Robert James was a "baby." Where were Robert James TEDFORD & his mother living at time census was taken? John A. TEDFORD m. Mary Jane McNEESE following Civil War & lived in Titus/Franklin Co TX area. Any & all help with this research problem would be appreciated. Sandra Tedford/200 Sherry Lane/Farmersville TX 75031

HAAS/TUBB: My ancestor John b. TN ca 1810 & his wife Lucy Mary Ann (?) HAAS were in Monroe Co MS 1840. Their near neighbors were George Tubb, Benjamin Tubb & John Tubb. John Haas witnessed the will fo John Tubb who d. Monroe Co MS 1839. Meanwhile in Dekalb Co TN a John Haas conveyed land, parts of tracts belonging to heirs of Amos Hass, to Manson M. Breen (Bruce?). John B. Tubb & James Tubb witnessed these transactions. Wm Hass owned land joining Tubb family land. Was there a connection between these Haas & Tubb families? Could my John Haas have been related to Amos Haas who had land in DeKalb Co TN? Any help appreciated in helping me find names of parents & siblings of John Haas b. TN ca 1810 & d. Lee Co MS Jan 18, 1879. Rebecca Haas Smith/Rt 1, Box 360/Coldwater MS 38618/(601)-562-4632

MATTHEWS: Seeking to learn relationship, if any, between brothers Samuel & Burgess MATTHEWS, who d. Marion Co TN in 1826/30 & 1846, respectively, & other Matthews individuals living in area at same times. These include William C., Nancy C. & Temperance in Marion Co; Jeremiah, Joel & John in Franklin Co; brothers James & John in Jackson Co, AL; brothers Samuel & Luke in Madison Co AL; and Thomas in Limestone Co AL. Will reimburse postage and copy costs. John R. Walker/3840 Arroyo Road/Fort Worth TX 76109-3411/(817)-926-0925

GREEN/TUCKER: Need parents & birth date of Levi Green b. 1853 NC, m. Rebecca S. Tucker 2 Mar 1871 Lawrence Co TN. Children: Emma; John; Margaret Jane b. 5 Mar 1876 Lexington TN; Enoch Russell b 17 Apr 1879 TN; Bill; Maude; Samilda Lee b. 4 Sep 1889 TN or AL; Jess J. Family moved to TX ca 1893 & settled in Palo Pinto Co near Gordon. Will exchange info. Doris I. Greeson/7101 Malta Street/San Diego CA 92111-4234

GREESON/ANDREWS: Need parents & place of birth for Nathaniel A. Greeson b. 24 Feb 1831, m. 27 Dec 1852 Limestone Co AL to Elvira N. Andrews. Children: Julia; William Augustus; Richard L; Charlie W.; James Thomas; Elbert N.; Strader H. Nathaniel & Elvira are buried in Wid Legg Cemetery near Bethel, Giles Co, TN. Will exchange info. Doris I. Greeson/7101 Malta Street/San Diego CA 92111-4234

JENNINGS: Need info on family of Martin Jennings who lived in Shelby Co AL from about 1820 to 1835, d. Claiborne Parish LA 1841. Wife Elizabeth PARKER & children Jasper, Almon Lee, Murial H., Albert J., Polly, William M., Martin C., Webb K., & Sarah A., wife on 1850 census of Union Co AR. Son Webb K. Jennings moved to Hopkins Co TX after 1860. Marvin Jennings/2499 Wooded Acres Drive/Waco TX 76710

JENNINGS: Seeking info on family of Samuel Jennings b. 1771 Prince Edward Co VA, d. 1848 TN, son of Robt & Rachel Jennings. After 1796 went to Maury Co TN. Wife Judith SIMMONS, had 7 children. Marvin Jenings/2400 Wooded Acres Drive/Waco TX 76710

WARD: Seeking parents of Hosea Ward b. NC 1808, d. Jefferson Co IL 1872. He married Emily JOHNSON 1827 Wilson Co TN & left there in early 1867. Also in IL were sons James & John Ward and daus Elizabeth & Martha Jane Ward, Keziah Frances Mount, and Harriet Mooney. Siblings of Emily Ward living in 1850 were William, James, John, Peter & Robert JOHNSON & Keziah PHILLIPS. Was Harriet Ward who married Stith Harrison in 1828 a sister of Hosea? Pauline Webb/656 S. Fairway Ter./Springfield MO 65802-3236

SHINAULT (CHENAULT)/LEMMONS/TEAL/ROLLINS: Researching families of Isaac SHINAULT (CHENAULT), John LEMMONS (LEMONS), Edward TEAL (TEEL) Sr. & Jr. & Joseph ROLLINS. All lived in the Beech Grove & Noah's Fork area in the juncture of Bedford, Coffee & Rutherford Cos., TN (1794-1883). My g-grandmother was Susan TEEL, she m. Joseph ROLLINS 17 Nov 1864 Rutherford Co TN. Probate records list here incorrectly as Susan KEEL. I have been unable to discover where Joseph ROLLINS came from or who his parents were. Would like to correspond with anyone researching these families & will gladly share what information I have. James A. Rollins/PO Box 22/Ochlocknee GA 31773

REEVES/JORDAN/HOWELL: Seeking records of WILLIAM REEVES, 1753-1830, wife Margaret? He is son of GEORGE REEVES and MARY JORDAN of NC, SC and Nashville and brother of CHARLOTTE REEVES, 1751-1843, wife of GENERAL JAMES ROBERTSON, settlers of Holston River (Nashville) ca 1780. Records sent to me: Wm. Reeves went to IL ca 1828 with at least 3 sons; twins, Thomas & Timothy, Clinton Co. & John, Bond Co., and dau. Nancy A. Reeves & husband, Elisha Pellers Matthew, Bond Co. Other children named, no other record: Perry, Wm., jr; George; Charlotte; possibly 2 other daus. Wm. Reeves returned to TN where he d. 1830. Are Wm. Reeves & wife Margaret (?) buried in Robertson Family Cemetery? Is WM. REEVES, JR. (wife Letitia?) father of my gr-gr-grandmother? ELIZA JANE REEVES b. 11 June 1819 TN m. RILEY G. HOWELL 28 Nov 1835, ST. Charles, MO, d. 18 June 1884, Franklin Co., AR. I will exchange records. Virginia Howell/418 S. Dos Caminos/Ventura, CA 93003/(805)644-3844

HOWELL/HOGUE/HOGG: Seeking parents and siblings of William HOWELL b. 1790 in TN? (from his 1860, 1870 census in MO must have been NC at that time). Married Elizabeth HOGUE ca 1810 (no records found). Son, Riley HOWELL b. 1812 Franklin Co. TN. Wm. Howell served in War of 1812 from Warren Co. TN; shown here 1830 census. Children born TN: Riley, John (?), Harvey/Hardin, Calvin, (dau unknown), & Gideon. This family in Hardin Co IL in 1840 census, Wm. widowed as Elizabeth d. 1839. Wm. Howell m. (2nd) Susan MASTERS, 1842 in St. Francois Co, MO. The area of their residence became Iorn Co. in 1857, where William Howel died 1875, age 85. Seeking parents and siblings of Elizabeth HOGUE/HOGG b. 1790-94. Is she dau of Gideon HOGH of Caswell Co, NC who received his Rev. War pension in Franklin Co, TN in 1819? Will exchange records. Virginia Howell/418 S. Dos Caminos/Ventura, CA 93003

TUCKER: Interested in finding descendants of Epps and Mary ? Tucker found in 1850 Giles Co TN census with following children: Callaway G. 24; James M. 21; Howell Harris 16; John W. 14; Mary 9. Believe this is same man as John Epps Tucker found in 1860 Marion Co AR census with wife Angeline age 34 (he was 60) and they had 2 babies, my gr-father Laben Epp was born to them in 1863. Need proof that 1850 Epps and 1860 Marion Co AR John Epps Tucker were the same. It is believed Epps Tucker was son of Gaberiel Tucker and gr-son of Daniel and Frances ? Tucker of GA, possibly Elbert Co, or VA. Avalee Philhours/Route One, Box 214/Hornersville, MO 63855

OF INTEREST

Ohio University. The Ohio University is offering a week long workshop in genealogy during the week of June 23-29, 1991. "The Great American Ancestor Hunt," directed by Mary Bowman, features 45 sessions for the beginning and advanced genealogist, with additional opportunities for hands-on experiences with computers, access to the Draper Papers, and the large resources in Alden Library. The speakers are professionals with many years of teaching experience and insight into the needs of genealogical researchers. Costs for the workshop are \$175 Conference fee, with housing and 17 meals at the College Inn from \$165 to \$255. For more information and a brochure, write Joy Spring, Office of Workshops & Conferences, Memorial Auditorium-LL, Ohio University, Athens, Ohio 45701-2979.

* * *

Member Wanda Killgore sends us a copy of the latest quarterly published by the **Fentress County Tennessee Historical Society**. Looks like a must have for persons with Fentress County connections. Membership is \$8.00 with those wanting to receive only the quarterly for \$5.00. They also have for sale an abundance of books on varying local topics. There will be an "extravaganza" April 27th "consisting of seminars, discussions, video displays, genealogy help sessions..." For more information write to Fentress County Historical Society, PO Box 178, Jamestown, TN 38556-1078.

The Montgomery County Historical Society has a newsletter edited by Gregory Poole (see our Cheatham County Tax Lists article). Irene Griffey, our past editor, is their Genealogy Editor. The issue we have in front of us is quite good. For more information write Montgomery County Historical Society, PO Box 262, Clarksville, TN 37041-0262.

* * *

We have lifted the following directly from *Valley Leaves* --"ESWAU HUPPERDAY. Are you familiar with Eswau Hupperday which means "Line River" in the Cherokee language? It is a very fine quarterly published by the **Broad River Genealogical Society**. They cover the counties of North Carolina and South Carolina through which the Broad River runs. Many early North Alabama pioneers came from or through that area... Vol. 10, No. 1, March 1990 includes a chronological table of the Battles of the Civil War, a monumental, serialized compilation. This quarterly is a bargain for a \$10 subscription and their address is: Broad River Genealogical Society, Inc., PO Box 2261, Shelby, North Carolina 28151-2261."

Back issues of *Middle Tennessee Genealogy*

are available for \$3.50 each, postpaid.

To order

Send check or money order with your request for specific issue(s) to:

Middle Tennessee Genealogical Society
P.O. Box 3016
Nashville, TN 37219-0016

MIDDLE TENNESSEE GENEALOGICAL SOCIETY
P. O. Box 3016 / NASHVILLE, TN 37219-0016

Membership Application

Name _____ Phone _____

Address _____ County _____

City _____ State _____ Zip _____

Occupation _____

Surnames and Counties being searched (include up to 18) _____ New Membership ☐ Renewal ☐

Make check or money order payable to Middle Tennessee Genealogical Society. Memberships \$15 per year. If paid after June 30, the dues are \$18. Add \$5 postage for Canada.

MIDDLE TENNESSEE GENEALOGICAL SOCIETY
P. O. Box 3016
Nashville, TN 37219-0016

Address Correction Requested

Non-Profit
Organization
U. S. POSTAGE
PAID
Permit No. 3229
Nashville, TN

IMPORTANT!

This is the last issue of the Quarterly you will receive if you have not renewed for 1991-92.
You'll find a form stitched into the center of this issue to make it easy for you.